



www.constructionnews.net ★ (830) 500-0071 ★ Volume 26 ★ Number 5 ★ MAY 2026

Top performer



Temple Athletic Complex constructed by American Constructors



Dripping Springs Wildwood Springs Elementary School constructed by American Constructors

In 1982, **Bill Heine** along with a handful of others founded **American Constructors**, which focused primarily on downtown mid-rise office buildings for private developers. Shortly thereafter, American Constructors grew to a staff of ten, and today the company employs 160 talented professionals specializing in commercial construction and construction management, including: general contracting, construction management, pre-construction services, design-build services, facility assessment and maintenance, concrete construction and self-perform work, complex commercial and institutional projects. Their main sectors of expertise include education, healthcare, manufacturing, high-tech facilities, and office.

As the market and Central Texas continued to evolve, American Constructors, led by **Marty Burger**, Chief Executive Officer (CEO); **Joe Charlton**, Chief Operating Officer (COO); and **Joe Moore**, Chief Financial Officer (CFO); expanded into larger, more complex projects, including K-12 and higher education, healthcare and manufacturing projects. Over nearly 45 years in business, the company has

grown into a full-service general contractor with a large professional staff and field workforce.

Earlier this year American Constructors was named a Top Performing Contractor by Associated Builders & Contractors (ABC) based on achievements they received in safety, quality, talent management, merit and project excellence. All top performers received ABC's Safety Training and Evaluation Process (STEP) Gold status or higher in 2025. Those on the list also had zero safety-related fatalities from Jan. 1 to Nov. 1, 2025. American Constructors proudly achieved the STEP Diamond last year which is the highest level of safety accreditation a company can acquire by ABC National.

American Constructors' combination of deep experience, technical expertise, and a strong commitment to both clients and the community has set them apart. With more than 40 years of experience in Central Texas and \$2.5 billion in completed projects, the company has built a reputation for delivering high-quality results while maintaining a client-first approach to every project. Additionally, American Constructors brings technical expertise in design-

build concrete construction, efficiently managing projects from concept through completion. This capability, combined with extensive experience handling complex developments, brings innovative solutions and dependable execution to every project. The company is deeply invested in the communities it serves, with a strong tradition of philanthropy that has raised more than \$2 million for local charities supporting children and families.

"This recognition by ABC National affirms American Constructors' company-wide mission of safety, quality and excellent client service," says Burger. "We have an incredibly talented team of employees, field staff, subcontractors and project partners. Without them, none of this would be possible. We're honored to be recognized as one of the top contractors in our region and look forward to what the future holds."

Headquartered in Cedar Park, TX, American Constructors is well-known for serving the central Texas market. Their primary focus has always been a 90-mile radius from Austin, TX, allowing them to focus on their community. -cwr

Class is in Session



Proline Paving, LLC doing some asphalt paving and pavement markings at Pat Neff Middle School courts in San Antonio.

A first of its kind

Growing up in a family-owned ready-mix concrete, sand and gravel, and landfill business, **Daniel McCarty** knows first-hand how debris removal can affect one's bottom-line.

"Waste/debris haulers change by volume - how much space is taken up in their trucks," states McCarty. "Then, they go to the landfill, run over the scales, and are charged by the pound. I always thought that was a little counter intuitive and somewhat unfair. If you don't stack your dumpsters well, then the hauler wins. But if you load it well, then the hauler kind of loses money and you win."

Trying to figure out a way to solve that dilemma, McCarty discovered a way to put onboard scales on their trucks, giving birth to **JunkStart Junk Removal**. Founded in January of 2023, JunkStart became the first and only pay-by-weight junk removal company in the entire country with a patent pending on their vehicle weighing technology.

JunkStart's pay-by-weight systems allows contractors, especially in the residential/remodeling sector, a viable alternative to the eye-sore of a dumpster

in a neighborhood driveway where their neighbors end up filling the dumpster with couches, mattresses and other large unwanted items in the night as they pass by. The same can be said for the interior construction firms doing a remodel or finish-out in an office building with no space for a dumpster, or the building owner doesn't want you a dumpster on sight.

"If you're building a middle school and you need a couple of dumpsters a day - that's usually a better option," adds McCarty. "But maybe at the backend of the job and you're finishing up, you may not need a dumpster pulled for two, three, four weeks, and debris is starting to pile up, the contractor can call us. We'll do the loading, weigh it and then be on our way. We do the load and all the lifting."

"The impact arising for landfill and disposal pricing is big, generally speaking. Normally disposal costs are a small part of a construction site's budget, but it does seem that people want their dumpsters back fast and cheap. Just in San Antonio, this has led similar dumpster companies to do things differently than they've always

done to be competitive. The rising costs across the construction sector are forcing subs to do more with less, haulers certainly being one of those."

Always looking for a way to improve opportunities to improve efficiencies in jobsite cleaning and hauling, contractors should consider the sequence of work and how debris removal can keep a job site safer, cleaner and more cost effective. Normal construction phases such as at the start of a project or demolition projects producing heavier waste and debris are more suitable for traditional debris removal, versus that of the final finishing stage in which a large container can add to an extra expense, taking up wanted/needed space.

Starting with a couple of trucks and three guys, JunkStart has grown to having five trucks and a crew of 18 in just three short years, serving the San Antonio metropolitan area, New Braunfels and Boerne. This year, JunkStart launched its first national franchising footprint, signing its first franchise in early April in Omaha, NE. "We're looking forward to expanding nationwide in a couple of years," states McCarty. -cwr



NOTHING IS OUT OF REACH

CRANE RENTAL
SPECIALTY RIGGING
MACHINERY MOVING
INDUSTRIAL STORAGE

NEW CLASS A STORAGE FACILITY

↓ IN BUDA, TX



CONTACT US

SAN ANTONIO 210.656.7900
AUSTIN 512.501.1718
ONLINE tntcrane.com



Advertisers Directory

A-1 Fire & Safety	8
ABC-South Texas.....	18
Alamo Crane Service.....	5
Alterman Electric	11
American Subcontractors Assoc. (ASA).....	9
Andrews Myers Attorney at Law	9
Aprio.....	3
Buyers Barricades.....	16
C&C Guide Service	7
Compact Equipment/Bobcat	13
Dausin Electric.....	4
First Light Fishing Charters	8
Harding-Conley-Drawert Tinch Insurance	10
HOLTCAT	20
Howell Crane & Rigging, Inc.....	5
JCH Construction	13
JR Ramon & Sons	12
KCS	5
Lynwood Building Materials.....	17
MadCat Metals	9
MCA-SMACNA	9
Mission Golf Cars	10
MPN Inc. The Exit Planning Coach.....	19
Pipeline Intelligence	19
Pro-Line Paving, LLC	16
Quality Fence & Welding	13
Raintree.....	18
River City Bolt	17
Rocky Hill Equipment Rental	8
Schweiss Doors.....	8
TNT Crane & Rigging.....	2
Wilborn Steel Ltd.....	3

Valrock Makes First Acquisition

Newly launched Fort Worth-based industrial acquisition firm, **Valrock**, partnered with Austin-based **Evergen Equity** to acquire a 194,255-square-foot manufacturing facility located at 10600 Fischer Road in Von Ormy, Texas, just 15 miles southwest of downtown San Antonio and adjacent to I-35 and Loop 410.

The site houses a long-tenured Smurfit Westrock heavy-use corrugated converting facility that has been central to the company's South and West Texas production network for more than 25 years. The operation serves industrial customers across San Antonio and South Texas. Smurfit Westrock is a global company with packaging locations in 40 countries and \$31 billion in net sales.

"This acquisition reflects the core of our thesis at Valrock," said Valrock Founder and Managing Partner **Pete Van Amburgh**. "Our focus lies with acquiring mission-critical manufacturing facilities, which are leased to operating companies under long-term net lease structures generating durable cash flow and contractual rent growth, with additional tailwinds from the reshoring of U.S. manufacturing."

The Smurfit Westrock facility is the



first direct acquisition for Valrock. The seller, a private investor, was represented by CBRE's San Antonio Investment Sales Team, First Vice President **Andrew Price** and Vice President **Braeden Bernstein**.

Van Amburgh launched Valrock in 2025 to build a scalable real estate operating platform focused on disciplined, opportunity-driven investments. He and Valrock Co-Managing Partner **Pete Sanborn** have since partnered to lead the platform, combining institutional investment experience with hands-on operating capability.

"Van Amburgh and I came together around a shared view on where

opportunity is and how to execute it," Sanborn said. "We have complementary backgrounds but approach underwriting and risk the same way, which allows us to move with conviction. We are actively pursuing opportunities on several fronts as we look to scale the platform."

Under Valrock, Van Amburgh will be responsible for the day-to-day oversight of the firm's strategy, capital formation and operations. Before Valrock, Van Amburgh was a founder of **PHP Capital Partners**, where he led the assembly of a more than 1.3 million-square-foot light industrial real estate portfolio across Texas.

Before PHP, Van Amburgh was vice

president of development for the national real estate development company **KDC**. He began his career at **CBRE**, where he oversaw underwriting of over \$15 billion in industrial and office transactions as a part of **CBRE National Partners**.

Sanborn will direct the investment strategy, acquisitions and portfolio management for Valrock. Previously, he was a senior director at **Hines**, where he oversaw fund strategy, acquisitions and asset management, totaling more than \$8 billion in industrial, multifamily, office, retail and self-storage assets. During his tenure, he helped launch Hines' \$2.5 billion flagship U.S. core-plus fund, which completed 32 acquisitions totaling more than 8 million square feet.

Before Hines, he was an associate at **Stream Realty Partners** focused on industrial leasing and development. He began his career working in the U.S. House of Representatives, serving as a senior policy adviser specializing in economic policy.

Also, among Valrock leadership is **Charlie Combs**, who serves as Director of Investments and is responsible for underwriting, due diligence and transaction execution across the firm's acquisitions.

Career Fair



The Plumbing Heating Cooling Contractors (PHCC) San Antonio was glad to be part of the North East Independent School District (NEISD) Student Job Fair at the Blossom Athletic Center. There were great conversations with high school students who are already thinking about their future and showed strong interest in joining the plumbing trade. Opportunities like this matter. Trade and apprenticeship programs give students a clear path to a

stable career while helping strengthen the future of the industry. Meeting students who are curious, motivated, and ready to learn reminds us why outreach like this is so important. These students are the future of the trades, and PHCC is excited to help connect them with the people and programs that can get them started. Thank you to NEISD for hosting a great event and continuing to support career and technical education.

Fiesta Magic

The Hispanic Contractors Association (HCA de SA) kicked off Fiesta 2026 with their amazing AEC Familia! This special event was all about building relationships, connecting with fellow industry members, and most importantly giving back.

Together, HCA de SA raised funds to support scholarships for the trades

and proudly donated \$2,000 to the Rey Feo Scholarship Fund! Thank you to everyone who donated, sponsored, and volunteered to make this mixer such a success at the beautiful, brand-new Monarch Hotel downtown. Your generosity is opening doors for future trade professionals to pursue their dreams. Photo courtesy of Amanda's Photo Booth



Aprio

Build Smarter with Aprio

Aprio provides industry-leading tax, financial, and advisory solutions to help you strengthen margins, reduce risk, and keep projects moving.

Visit Aprio.com/construction

A growing legacy

Big things are happening for **Big State Electric**. Founded in 1966 by **Palmer Johnson** and his wife, **Jerry**, Big State Electric began making a name for itself in the '70s through the established relationship the Johnsons built with Southwestern Bell, Southwest Research Institute and Lone Star Brewery. They built a reputable company working with their son Bill Johnson and Palmer's Brother and Sister-In-laws, Dwight and Katherine Scheule, on Euclid Street in a small 3,000-sf office warehouse.

After working in the field managing various projects, **Vincent Real** was promoted to an estimator/project manager in 1997. In 2000, he became the company's vice president and in 2004, Real purchased the company from the Johnson family and became president of Big State Electric.

In 1997, Big State Electric was considered a small company with 50 – 60 employees, limited resources and capacity. By 2004, the company had grown to a company of 100 employees and still unable to pursue larger opportunities. That is until Toyota announced they were building an automotive plant in San Antonio, triggering Big State to grow to another level.

Two years ago, the management team at Big State Electric realized the need for a larger facility and began making plans to expand its current campus on Aero Street. On Apr. 13, Big State Electric hosted a groundbreaking ceremony for its new 40,000-sf office/warehouse facility. The new facility will include a 17,000-sf, two-story office space, a state-of-the-art training room, and 25,000-sf of warehouse space.

Big State's VDC team will relocate from its current stand-alone building over to the second floor of the new office space. Its Service, Controls and Limited Energy Division will also relocate to the new facility, allowing more space for its Construction, Pre-Construction/Estimating and Water Divisions to continue growing.

Additionally, Big State's long term plan to have offices in the major municipalities in Texas to serve their clients with business and offices throughout Texas came to light in 2024. When Co-Vid halted discussions in 2020, they reengaged negotiations to acquire **Boggs Electric**, an established 30-year company serving the Dallas/Fort Worth area in 2024.

Big State Electric remained in the Boggs offices for

almost a year until they purchased a 17,000-sf office and 50,000-sf warehouse facility in Arlington, TX. In December of 2025, the company held a special celebration with its employees at their new location honoring **Mike Boggs** and his new retirement, announcing the transition from Boggs Electric to Big State Electric.

At the celebration, a message was shared with the Boggs existing team on how important it is to maintain what Mr. Boggs had built and how important it is that they, the new Big State family, continue to take care of existing employees and legacy clients.

"The acquisition included about 50 employees, assets, and some great long-term clients that we continue to serve under the Big State Electric Brand," says President and CEO Real. "We anticipate to over double our revenue and total employee count before the end of 2026. The long-term goal is to expand our Electrical Construction including, Service, Engineering, Medium Voltage, Water and Controls Divisions into the North Texas area."

Big State Electric, celebrating 60 years in business will be hosting a celebration and open house in their new campus addition in the spring of 2027 after its completion. -cwr



Vincent Real

Happy birthday



Former Construction News Owner, **Buddy Doebbler** celebrated his 77th birthday on Apr. 13. His wife and former co-owner, **Reesa Doebbler**, surprised Buddy with a cowboy-themed dinner with several friends at Richter's Antler Café in Spring Branch, TX. The eight in attendance had a great time, celebrating with great food, drinks, and a lot of laughter. -cwr

A Week of Architecture



As part of Architecture Week, high school students joined **Alamo Architects** for a job shadow day. Alamo enjoyed sharing their process and time with students exploring a future in architecture and design.

Students in attendance were from: JISD Wagner High School, Somerset ISD's Shirleen Zacharias Early College Leadership Academy, NISD Brandeis High School, and SAISD Advanced Learning Academy.

POWERING TEXAS PRIDE



Dawson Electric Co.

FAMILY OWNED AND OPERATED FOR OVER 30 YEARS

COMMERCIAL • SERVICE • RESIDENTIAL

210.661.6736

Contractor Lic. #17323
Master Lic. #2647

8007 NE Loop 410
San Antonio, TX 78219

San Antonio CONSTRUCTION NEWS

Publisher..... Haley Mathews
Editor..... Andi Mathews
Production..... Kayla Johnson
Staff Writer..... Carol Wiatrek Rothman
Advertising..... Haley Mathews

Managing Editor:
Andi@ConstructionNews.net

San Antonio Area Counties
Atascosa, Bexar, Bandera, Comal,
Guadalupe, Kendall, Medina and
Wilson counties

Construction News Home Office
P.O. Box 310207 • New Braunfels, TX 78131
830-500-0071

www.ConstructionNews.net

Visit our Website to sign up for a
free monthly Digital Subscription
www.ConstructionNews.net

The *San Antonio Construction News* is published monthly by Construction News and distributed by mail to construction-related companies of record in Bexar and 7 surrounding counties.

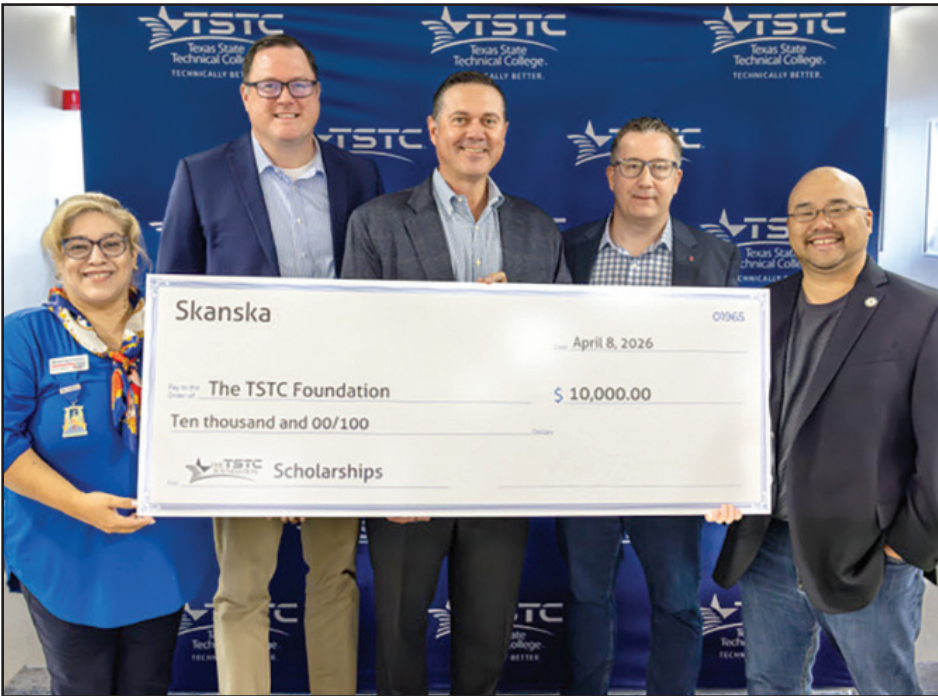
All submissions should be emailed to our editorial offices. We reserve the right to edit any materials submitted. No fees for materials, copy or photographs submitted will be due unless agreed upon in advance in writing. Submissions will be published at our discretion on a space available basis.

Construction News will not be liable for errors in copy or in advertisements beyond the actual cost of space occupied by the error. Publisher reserves the right to reject any advertisement at any time.

©2023 Construction News, Ltd.

SIGN UP FOR OUR FREE DIGITAL SUBSCRIPTIONS
GO TO www.ConstructionNews.net Select "Digital Subscription".

Investing in the Future Workforce



S skanska today announced a new investment in the next generation of skilled trade professionals through a donation to Texas State Technical College. The company presented a check for \$10,000, reinforcing its commitment to strengthening the construction workforce pipeline across Central and South Texas.

As Texas continues to grow at more than double the U.S. average, demand for skilled labor is rising at an unprecedented pace. With a strong pipeline of civic, commercial and education building projects underway and on the horizon, Skanska is actively investing in solutions to help close the industry's persistent skills gap.

"Central and South Texas are seeing tremendous growth, and with that comes an urgent need for highly trained craft professionals," said **Keith Sitzman**, vice president of operations at Skanska USA Building in San Antonio. "Supporting Texas State Technical College is an investment not only in students, but in the long-term success of our industry and the communities we serve."

The contribution will help expand access to hands-on training programs, equipping students with the technical skills needed to succeed in high-demand trade careers. The funding is expected to support approximately 10 students as they complete programs designed to prepare them for immediate entry into the workforce.

Skanska's partnership with Texas State Technical College reflects a broader commitment to workforce development and community engagement. By collaborating with local educational institutions, Skanska aims to build a

sustainable talent pipeline that meets the evolving needs of the construction industry while creating meaningful career opportunities for individuals across Texas.

"Closing the skills gap requires collaboration between industry and education," said **Mike Anderson**, provost of TSTC in New Braunfels. "We are proud to develop partnerships with organizations like Skanska, which help even more students realize their potential with real-world training and open doors for individuals pursuing technical careers."

With multiple projects underway throughout Central and South Texas, Skanska continues to prioritize local hiring and workforce development initiatives that strengthen regional economies and deliver long-term impact.

Texas State Technical College (TSTC) is the only statesupported, multiplecampus technical college in Texas, dedicated to helping the state meet the hightech workforce needs of today's rapidly evolving economy. Through strong partnerships with industry, government, and educational institutions, TSTC delivers hands-on, skillsfocused training that prepares students for indemand careers.

As a coeducational, twoyear institution, TSTC offers occupationally oriented programs supported by academic coursework, with a focus on advanced, emerging, and highly specialized technical fields. The college plays a vital role in Texas' educational and economic development by offering certificates and associate degrees aligned with workforce demand.

HOWELL CRANE & RIGGING, INC.

SAN ANTONIO (210) 661-8285 AUSTIN (512) 317-1000 DALLAS/FT. WORTH (214) 375-8285 PHARR (956) 787-7777

24 HOURS, 7 DAYS A WEEK

Audie Howell, President
cell (210) 862-5301
audie@howellcrane.net

HYDRAULIC CRANES
HEAVY HAUL
15 TO 500-TON
45' FLOAT W/TRACTOR

YOUR AD
HERE

Advertise with
Construction News!
Call Haley today
at 830-500-0071

15 to 770 Ton Capacities Available for your Toughest Projects

From the smallest job to the largest, we have the equipment, manpower and expertise to handle them all.



Swapping out rooftop units.

It's not always better to be the biggest, but it is always better to be the best.
Serving Texas since 1979

www.alamocrane.com



San Antonio (210) 344-7370
Austin (512) 282-6866
State Wide (800) 880-0134



Tanner Mathews
713-829-8894
tanner@kennyscs.com

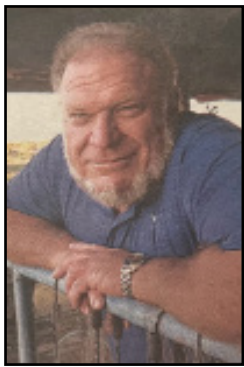


Premier Landscape Renovation

ARTIFICIAL TURF | DECORATIVE STONE
FLAT WORK | FENCES & GATES



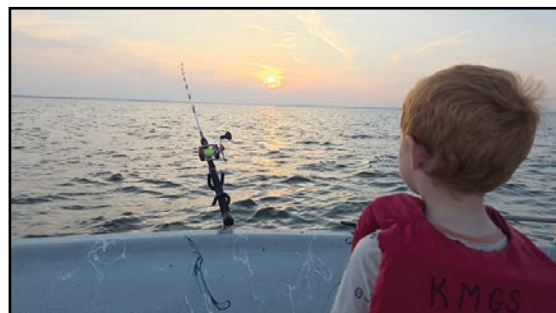
The Great Outdoors



Ken Milam

Ken Milam's Fishing Line

Since 1981, Ken Milam has been guiding fishing trips for striped bass on Lake Buchanan in the Texas Hill Country.



Wow! What a weekend!

After a week of cool misty weather, the clouds finally melted away, and fishermen started appearing out of nowhere! They rented cabins, launched boats, and headed up the lake after catfish! They kicked the spring catfishing off right, bringing in several large yellow catfish and a couple of blue catfish in the 30–40-pound range and plenty more in between at the best eating size. The catching was strong all weekend and we finally started using the wheelbarrow to haul fish over to the fish cleaning table!

Add to that, the clearing weather helped to kick the stripers and hybrids into the solid bite pattern that we had been looking for! The unsettled weather had been slowing down the action to the point that we wondered if the fish were watching the weather forecast and looking for places to hide. When the sun came out the stripers and hybrids came out hungry!

We went out with our family to take our grandkids on their first real striper trip and had ball! They loved the boat ride! When the catching started, the six-year-old caught on in no time to watching the rod tips bend to the water and reacted quickly to every "Fish ON!!!" call. The two-year-old wanted to pet the bait and do everything her big brother did! We had enough fish for supper and a mess of ceviche in no time.

The ride back to the dock was nice and smooth, riding on the backs of the waves with a dying wind. The kids were singing and counting the appearing stars and learning their names. Then came the unloading of the fish, bragging on the catch and taking plenty of pictures.

It was a joy helping pass the love of fishing down to another generation and sharing this time with them! Learning to fish and have an appreciation of the outdoors is something they can carry with them throughout their lives.

Get ready now! School is almost out for the summer, and you know you will be looking for summer activities! We still have openings for summertime fishing trips and cabins.

Summertime also brings other special events that might give you a good reason to go fishing. Fishing trips work great for Father's Day, birthdays, graduations, and bachelor parties! Any time you get to spend time with important people away from the daily routine is a treat!

We are looking forward to strong summer fishing this year. The lake level here on Buchanan is the best in years and the large population of stripers and hybrids that have been just a bit too small to keep are finally legal keepers so full limits caught should be a frequent occurrence. It's going to be a great summer! Come join us!

Beating the front



Despite some 20-plus-mph winds, **Stan Rothman, EquipmentShare** had a great time fishing. Over the Apr. 17th weekend, Rothman and five of his buddies went to Port O'Connor for a weekend of camaraderie and fishing fun. On Saturday, L-R: **Tim Cooper**, Stan Rothman, and **James Gale** managed to bring in nine trout and one large red under the guidance of **Captain Brittany Gale** of **Gale Force Outdoors**. -cwr



After 20 years in the construction industry, **Jennifer Swinney**, Executive Director of **American Subcontractors Association (ASA)** San Antonio finally snagged her first "o-FISH-al" photo for our Outdoor Section with a speckled trout. It may have been too small to be a keeper but it was too big to be bait. Congrats Jennifer, hopefully you caught the fishing bug too!

The **Memco Staffing** San Antonio team enjoyed the 5th Annual **Marek** Crawfish Boil. Memco would like to thank Marek for a great event!





The Great Outdoors

The spring bite this year has been on fire!

Between guide trips, making Unicorn Shit Punch Bait for catfish, and installing marine electronics and rigging boats.... it's been nonstop. So, let's recap on some of my past trips starting with Falcon Lake.

Bass fishing has been exceptional with our best day producing over 60 fish and our best 5 weighing 28.5 lbs. Shallow or deep they can be caught and any cast can be a giant.

Shallow:

- Bushes and rocky shorelines in 1 to 5 feet of water.
- Spinner baits, swimbaits, shallow and medium diving crankbaits, and Texas rigged senkos worked best.

Deep:

- Old house foundations, rocky points, and ledges in 6 to 25 feet of water.
- Medium and deep diving crankbaits, jigs, swimbaits, spinnerbaits, and tx rigs produced very well.

Crappie bite was on fire as well. Brush piles and standing timber in 12 to 15 feet of water seemed to produce the best. 1/8 oz jig head with a dark colored soft plastic presented vertically.

Calaveras lake has been fishing exceptional as well. The redfish bite has been the most active as they start to make their way to their summertime haunts.

Long lining dark colored swimbaits around the dam and rocks has been an exciting bite. While bait fishing rocky

points and flats with shrimp has been the most consistent for limits.

The catfish are coming off the spawn and have begun to bite a little more consistently. Shrimp freelined on rock piles or punch bait dropped on baited holes has been the best 2 ways to catch them.

Coletto Creek has been a little slower than usual this year, but I blame it on the lake being 4 foot low. The bite has been good for crappie with a ton of little ones in the mix. Minnows or dark colored soft plastics on an 1/16 to 1/8 oz jig head presented vertically on standing timber near creek channel bends has been the ticket. Not to mention brush piles and the bridge pilings.

If you would like to book a trip and fill the cooler or chase your PB, shoot me a text or give me a call at 210-831-4679.



Captain Clendon Taylor
C & C Guide Service
210-831-4679
 or find me on my social platforms
 f C&C Guide Service
 Instagram castingandcatchingguideservice

Sponsored by:
 Mercury Marine | BAJIO Sunglasses
 Power-Pole Total Boat Control
 Fish Tackle & Marine
 Livingston Lures | ATX Lure Company



Low Water, Big Opportunity: Fishing Tactics for Texas' Shrinking Lakes

Across Texas, anglers are being forced to adapt to a reality that's becoming more common: less water, tighter structure, and fish that are easier to find—but harder to fool. While recent rains have provided temporary relief in parts of Central Texas, the bigger picture remains unchanged. Many reservoirs remain below normal levels, and drought conditions continue to shape fishing patterns across the state. Low water doesn't just change the view—it completely reshapes how fish behave.

THE NEW LAKE MAP – Low water condenses everything. What used to be vast, open water becomes a tighter playing field. Shorelines pull back, exposing rock piles, creek channels, and timber. Baitfish concentrate in predictable zones, and predator fish follow closely behind. It sounds like an advantage—and in many ways it is—but fish also become more pressured and selective.

TACTIC #1: TARGET THE "NEW STRUCTURE"

What's visible now was hidden for years. Newly exposed rock ledges, fence lines, and submerged

roadbeds become prime holding areas once water stabilizes around them. Work Texas-rigged plastics or jigs slowly along drop-offs, focusing on transition zones like rock to sand or shallow to deep edges. Fish tend to move shallow early and late, then slide deeper during the heat of the day.

TACTIC #2: FISH DEEPER THAN YOU THINK

Even with less water overall, fish often move deeper for stability. Bass will hold near channel edges, catfish settle into deeper holes, and crappie suspend over brush piles or standing timber. Focus on steep banks and main-lake points when searching for fish.

TACTIC #3: SLOW EVERYTHING DOWN

Low water often brings clearer conditions, especially in the Hill Country. Fish get a better look at your bait, so presentation becomes critical. Downsize your bait, stick with natural colors, and add longer pauses. Success comes from patience and precision.

TACTIC #4: FOLLOW THE BAIT

Seasonal patterns still matter, but baitfish location matters more. Look for bait near creek channels,

wind-blown banks, and oxygen-rich areas after rain. If you find bait, you'll find fish.

TACTIC #5: BANK FISHING IS BACK

Low water opens access to areas that were unreachable for years. Long points, exposed humps, and shoreline cover are now accessible to bank anglers, creating new opportunities across Texas lakes.

THE BIGGER PICTURE – Drought conditions remain a factor across Texas, and while occasional rain helps, long-term recovery will take time. For anglers, adapting to low water conditions is no longer optional—it's essential.

FINAL CAST – Low lake levels aren't ideal—but they aren't the end of good fishing. In many ways, they simplify it. Fish are more predictable, structure is easier to identify, and patterns are tighter. The anglers who adapt—who slow down, adjust depth, and learn the "new lake" are the ones still finding success. Because in Texas, even when the water drops... the fishing doesn't.



The Great Outdoors

May the Fish be with you!



The transition month is here! The croaker start showing up, trout are hungry and the reds start getting sneaky. Just in time for the Babes on the Bay Tournament. If you're on the hunt for reds for your babes, the last couple years of winners came from Nueces bay. If you're feeling froggy the back reefs around Whites Point is always known for holding them this time of year. If you're just excited to be out

there for the trout the bay is your oyster. Which bay? Any, they are everywhere already. Ledges, flats, reef, rock. It's a calm morning? Hit the reefs in the middle of the bay. They're all over them! If you're fishing north there's a ton of perfect size 16-18" drum all over. Keep the Tony's and lemon handy for grilled drum.

Up skinny in South Bay always has big trout wondering around with the reds. Swan

Lake will start having sows moving in as well. Top waters any time there's bait popping or overcast, don't sweat that grass. If you're fortunate enough to be on the bay mid-week, Traylor Island up skinny has reds meandering and big trout. But don't even stop if there's a bunch of boats. The fishing pressure will shut them down. Broke back and Custom Corkie's were working well on them. Tight Lines!



First Light FISHING CHARTERS





Quit wishing, lets go fishing! Book Here!

Bay Fishing Trips, Multi Boat Trips
USCG Licensed Captains

Rockport TX
210-478-6519
Port Aransas TX



A-1 FIRE & SAFETY
Serving South Texas since 1971

210-342-5518
210-342-3533 FAX

- Fire Extinguishers
- Extinguishing Systems
- Hydrostatic Testing



203 E. Rhapsody • San Antonio, Tx 78216
email: info@a-1fireandsafety.com
www.A1fireandsafety.com

Onsite and In-Shop Servicing
Onsite fire extinguisher training
Factory trained for all services






EQUIPMENT RENTALS

TRENCHERS • ROCKSAWS • BACKHOES • LOADERS • & MORE

Your #1 Local Rental Company For All Large Equipment Rentals

- No Job Too Large or Too Small
- Delivery Available Everywhere
- With or Without Operators

651-5611
16701 IH 35 N
Selma, TX 78154

Visit us at www.rockyhillequipmentrentals.com

READ THE NEWEST ISSUE ONLINE!


www.constructionnews.net












507-426-8273

DOORS

HYDRAULIC
ONE-PIECE DOORS

— OR —

BIFOLD
STRAP LIFT DOORS



SCHWEISSDOORS.COM

THE DOOR LEADER

Viva fiesta

On Apr. 15, the San Antonio Chapter of the Plumbing Heating Cooling Contractors (PHCC) held its Plumbing in Women Fiesta Mixer. The fun-filled event was held at Chris Madrid's. Over 50 women from the PHCC membership were in attendance. President and CEO **Cecilia Castellano** of **Azteca Design & Construction** was the event's guest speaker. She delivered a powerful inspiring message for all women, encouraging them to seek their dreams and to never doubt their abilities. -cwr



L-R: **Karin Wasylw**, ADKF; **Patricia Ramirez**, A-Ran Plumbing; and **Carol Rothman**, Alamo Crane Service



L-R: **Shannon Bolin**, Bolin Plumbing; **Angie Gonzalez**, JR's Plumbing; **Patricia Ramirez**, A-Ran Plumbing; **Cecilia Castellano**, Azteca Design & Construction



Guest Speaker and President/CEO **Cecilia Castellano**, Azteca Design & Construction

Member meeting

Members of the San Antonio Chapter of Plumbing Heating Cooling Contractors (PHCC) came together for their monthly membership meeting and mini-trade show on Apr. 9. The event was held at Northern Hills Golf Club where several associate members of the association exhibited their products and services prior to guest speaker **Harold Moret**, Project Manager & Piping Applications Specialist for **Copper Development Associations Inc.** took the podium, educating the membership on the sustainability of copper. -cwr



PHCC Executive Director, **Heidi Trimble** with **Harold Moret** of Copper Development Associations Inc.



Milwaukee Tools



ADKF



Alamo Crane Service



Frost Bank



Ancira Chevrolet



Miller Mays & Associates

Helping Communities Flourish



SpawGlass would like to recognize Assistant Project Manager **Phillip Maldonado** and the SpawGlass-San Antonio team for their meaningful contributions to Northside ISD. The SpawGlass team was nominated for NISD Partner of the Year by the faculty at Virginia Myers Elementary for donating supplies to students in need.



Associations & Education ★ General Contractors ★ Subcontractors ★ Service Providers ★ Subcontractors ★ Supplies ★ Truck & Equip Dealers

Associations and Construction Education

San Antonio American Subcontractors Association - San Antonio
 9631 McCullough Ave
 San Antonio, TX 78216
 210.349.2105
 jennifer@asasanantonio.org
 www.asasanantonio.org
 @ASASanAntonio

MCA-SMACNA
 Mechanical & Sheet Metal Contractors Association of San Antonio
MCA-SMACNA of San Antonio
 206 E. Nakoma St.
 San Antonio, TX 78216
 (210) 822-3763
 Sandee Morgan, Executive Director
 sandee@mca-smacna.org
 www.mca-smacna.org

Service Providers

Andrews Myers
 R. Carson Fisk
 Shareholder
 Andrew Myers • Attorneys at Law
 919 Congress Ave, Ste 11050 • Austin, TX 78701
 T 512.900.3012 D 512.900.3032
 cfisk@andrewmyers.com • andrewmyers.com
 Board Certified | Construction Law
 Texas Board of Legal Specialization

MadCat Metals
 Architectural & Decorative Product Runs

Diego@MadCatMetals.com
 Field Dims & In-House Design Work
 San Antonio, Austin, & Houston Area

For Information on Resource Guide Ads, contact **Haley Mathews**, 830-500-0071 or email at haley@ConstructionNews.net

ASA San Antonio Hosts Record-Breaking Subfest & BBQ Cook-Off

ASA San Antonio's annual Subfest & BBQ Cook-Off drew a record-breaking crowd this year, with more than 1,500 attendees coming through the gates at the Helotes Fairgrounds for a day of outstanding barbecue, live entertainment, and family-friendly fun.

The event featured 40 registered cook teams and exhibitors, showcasing some of the best talent in the industry. Attendees enjoyed a wide variety of expertly prepared barbecue as teams competed and connected with fellow industry professionals and community members.

After days of uncertain weather, conditions aligned perfectly as the rain held off, allowing guests to enjoy a

beautiful day outdoors. Families were a central part of the celebration, with children seen throughout the grounds wearing sheriff badges and cowboy hats while participating in a variety of activities. Entertainment included face painting, balloon artists, a petting zoo, and cotton candy, creating a welcoming and engaging environment for all ages.

Live music from the Mario Flores Band provided a high-energy backdrop for the event, with attendees gathering to enjoy the performance and festive atmosphere throughout the afternoon.

In addition to great food and entertainment, guests participated in raffles and prize drawings, adding

excitement and anticipation to the day's activities.

"Subfest continues to be one of our signature events, bringing together our members, industry partners, and the community in a meaningful way," said Ted Dunnam, ASA Subfest Committee Chair. "It's a celebration of the people who make our industry strong."

ASA San Antonio extends its sincere appreciation to all cook teams, exhibitors, sponsors, volunteers, and attendees who contributed to the success of this year's event. Special thanks to Dunnam Safety Management, our Title Sponsor, for their generous support in making this event possible. *Photos courtesy of Mary C. Haskin Photography*



1st Place Best Camp Alamo Crane Service



1st Place Brisket Texas Cutting and Coring



1st Place Chicken Cool River Steel



1st Place Ribs Texas Cutting & Coring



2nd Place Best Camp MEMCO



2nd Place Brisket Joeris



2nd Place Chicken Joeris



2nd Place Ribs MEMCO



3rd Place Best Camp Alpha Insulation



3rd Place Brisket Cool River



3rd Place Chicken TNT Crane



3rd Place Ribs Alterman



Grand Champ Texas Cutting and Coring



Peoples Choice Alterman



Reserve Champ Joeris General Contractors



CUSHMAN

CUSHMAN HANDLES ALL THE DEMANDING WORK





SALES, RENTAL AND LEASING




MISSION GOLF CARS
EST. 1983

AUSTIN (512) 312-4115 | SA (210) 545-7868 | MARBLE FALLS (830) 201-0344
MISSIONGOLFCARS.COM /MISSIONGOLFCARSWACOTX

HCDT
BONDS INSURANCE

HARDING-CONLEY-DRAWERT-TINCH
INSURANCE AGENCY, INC.

BONDS & INSURANCE
FOR THE CONSTRUCTION INDUSTRY

2161 NW MILITARY DR, SUITE 210
SAN ANTONIO, TEXAS 78213

PHONE: 210-647-0134
FAX: 210-647-0138
www.hcdtbond.com

“Be Your Own Boss”

JCB, one of the world’s largest independently owned manufacturers of construction equipment, today announced the launch of Be Your Own Boss (Sé Tu Propio Patrón), a program that provides Hispanic construction professionals with the tools, training, and financial resources needed to launch and grow their own construction business.

“With Be Your Own Boss, we’re not just selling equipment; we’re investing in people who are essential to the construction industry,” said **Marc-André Dubois**, Vice President of Marketing at JCB North America. “This program reflects our long-term commitment to helping hardworking Hispanic professionals transform their experience and determination into successful, sustainable businesses.”

Hispanics make up roughly one-third of the U.S. construction workforce, and in states like Texas, California, and Florida, they represent more than half. Despite their vital contributions to the industry, many face limited access to financing and business resources.

In fact, a report by the Congressional Hispanic Caucus Institute found that 70% of Hispanic entrepreneurs fund their ventures



through personal savings, and insufficient access to such savings remains the primary obstacle to business ownership. The Hispanic Construction Council states that 90% of Hispanic construction firms lack adequate support from traditional banks in accessing bank products.

Developed in response to the significant barriers many Hispanics construction workers face when starting and elevating their

entrepreneurial journey, Be Your Own Boss offers tailored solutions to help turn ambition into ownership and long-term success. The program provides bilingual resources, business coaching, initial capital, customized financing options for ITIN holders and first-time buyers, and direct connections to trusted JCB dealers nationwide.

“Hispanics have built the homes, roads, and cities of America – it’s time

we also build our own legacy,” said **Sergio Terreros**, President of the National Hispanic Contractors Association. “Thanks to JCB for launching this visionary program that empowers our community to shift from workers to owners, from doing the job to leading the business. This is how we create opportunity, pride, and generational success.”

The launch of Be Your Own Boss coincides with JCB’s continued investment in Texas, highlighted by its new \$500 million, 1-million-square-foot facility in San Antonio. This expansion underscores JCB’s long-term vision to grow its footprint in the U.S. while strengthening local economies and empowering the workforce driving the construction industry forward.

“I have firsthand experience in the opportunities JCB provides as this global company has given me the tools and resources to help launch this powerful program for my fellow Hispanics,” added **Roniel Rivera-Garcia**, spokesperson for JCB’s Be Your Own Boss. “Through Be Your Own Boss, we’re proud to be a true partner in progress, breaking barriers, creating opportunities, and helping build a stronger, more inclusive future for the construction industry.”



OVER 1500 EMPLOYEES

EMR OF 0.50 (2023)

LOCATIONS

SAN ANTONIO
AUSTIN
DALLAS
NEW MEXICO

CAPABILITIES

- Electrical Construction
- Pre-Construction Services
- Technologies
- Security Solutions
- Controlled Access
- 24-Hour Emergency Service
- HVAC Controls
- Industrial
- Water/Wastewater
- I&C
- Preventative Maintenance
- Outdoor Substations

CONNECT WITH US

www.goalterman.com
210.496.6888


Alterman-Inc


@GoAlterman


@GoAlterman

Advancing Healthcare Readiness at Vertex Surgery Center

As healthcare facilities prepare to meet growing patient demand, renovation projects play a critical role in ensuring environments are safe, efficient, and ready for operation. **Core Electrical Group** recently supported the renovation of the new Vertex Surgery Center in Westover Hills, completing targeted electrical upgrades ahead of the facility's opening.

The work focused on strengthening both patient experience and operational performance. Lighting upgrades throughout the main corridor and reception areas improved visibility while creating a more welcoming first impression. Within a dedicated lab space, new lighting was installed to support precision and day-to-day functionality.

Behind the scenes, critical systems were brought up to standard in clinical areas. The team repaired emergency lighting within operating rooms and performed testing on isolated power panels in accordance with NFPA 99

requirements, reinforcing the reliability these environments depend on.

Exterior improvements extended the impact beyond the building itself, with repairs to existing lighting and the addition of new wall-mounted fixtures to enhance visibility and overall site safety.

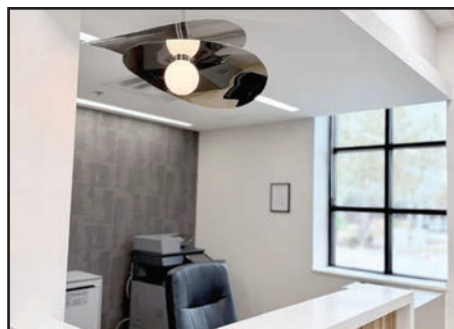
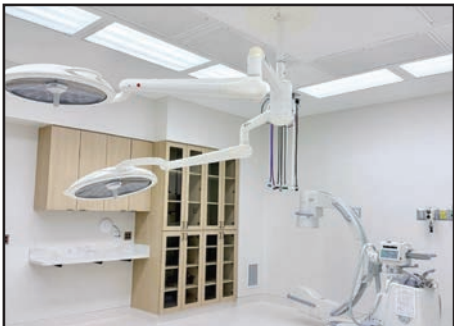
Healthcare projects demand a high level of coordination, attention to detail, and strict adherence to code. At Vertex Surgery Center, electrical systems were not just upgraded, they were aligned with the performance and safety standards required for a facility to serve its community.

Core Electrical Group continues to support projects across healthcare, education, and commercial sectors, delivering work that prioritizes safety, performance, and long-term reliability.

Written By: Allura Williams | Business Development and Marketing Associate



Your Strength Begins With Your Core



JRRAMON
DEMOLITION

SERVING CENTRAL & SOUTH TEXAS SINCE 1945

With decades of experience, precision equipment, and a team that puts safety first, we handle everything from selective interior demo to full-scale structural removal.

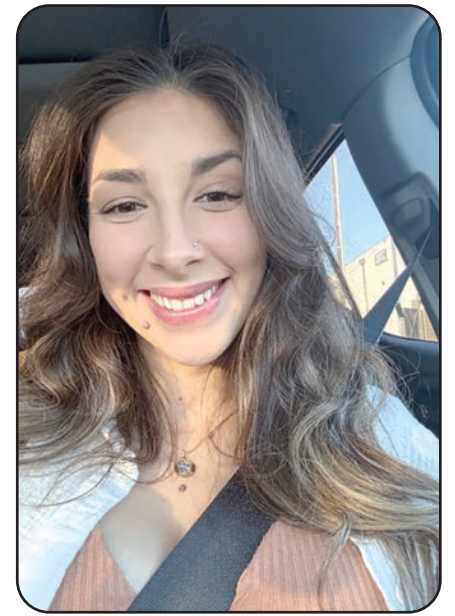
Get an estimate today!

RAMONDEMOLITION.COM | 210.225.1583

Industry FOLKS

Brittany Padilla

Executive Administrative Assistant
Plumbing Heating Cooling Contractors Association (PHCC)
San Antonio, TX



Brittany Padilla, Executive Administrative Assistant, Plumbing Heating Cooling Contractors Association (PHCC), San Antonio, TX

Born and raised on the southside of San Antonio, Brittany attended and graduated from Southside High School. After graduating, Brittany attended Mary Baldwin University in Staunton Virginia for two years.

"It was an all-female college when I attended. I was enrolled in the Virginia Women's Institute for Leadership through the University, which is the only all-women's corps of cadet in the U.S. College life was full of surprises. I met so many wonderful women that always pushed for greatness. Between college and corps traditions, my schedule was always full. It was a time I will never forget and will always cherish."

After two years, Brittany transferred Texas A&M San Antonio for the next year and a half of her studies. While attempting to major in business marketing with a minor in accounting, Brittany was unable to receive her degree as Co-Vid came around and, she and her family got very sick.

While she did not complete her degree, she chose of field of study because of her love for math. She was also inspired by her accounting professor who had talked about how she was always challenged by business owners on her not being able to "clean their books." "She was a very smart woman who loved a challenge, and so did I."

Brittany is happily married to her husband of two years, Cody Garza. They met in 2019 while Brittany was working retail. He was a diesel mechanic for an electric company. What turned out to Brittany trying to be a helpful salesperson turned into the two of them having a bond like no other. "Cody's a genuine, kindhearted, well-rounded man who I can always rely on. If I could do life all over again, I would always choose him."

Together, they currently have one son and are expecting another baby boy in June of this year. According to Brittany, their son, Jace, is a perfect mix of Cody and Brittany, stubborn but very kindhearted. Jace will be turning four in September this year. "It's so amazing to see his personality come through. Jace loves being buck naked outside with his chickens and our dog, Bailey."

Bailey is a beagle/pit mix who is more on the timid side when it comes to meeting new people but once she's comfortable, she'll be taking everyone a ball to throw for her. She's very active and loves the outdoors, but

when Brittany and Cody leave for work, she can be inside all day, just sleeping. "Bailey is very loyal and loving. She is probably one of the most patient dogs that I have ever been around, especially with Jace, they're inseparable."

Brittany's husband worked for an associate member of PHCC-SA when he heard that PHCC-SA was looking for an Executive Admin Assistant. Still working in retail as an assistant manager, more so on the traveling side, Cody and Brittany decided it was time for a change and accepted the position executive administrative assistant position in June of 2025. Her main focus is PHCC's Apprenticeship Program, but dabbles in all the association's events throughout the year.

"The people and watching the young men graduate from the apprenticeship is what I love the most about my job. They sacrifice four years of their evenings in order to pursue a trade that will never go out of style and will always need real people, not AI. They could be at home with their loved ones but they make the effort to pursue greatness and it's very influential to see them succeed."

From high school, to college, and up until now, everyone who has crossed Brittany's path has influenced her to be more, never accept less, and never give up. "Life will throw so many unexpected things your way, but it's the people you choose to bring into your life that will help you get through not just the bad times, but all of it. I am forever grateful for those people that have been and are in my life, because they still have an impact on me to this day."

When asked what she does to relaxed, Brittany said, "Honestly, I have no interest or hobbies besides being a full-time mother and employee. I love what I do and praise the women that can do it all! It's tough in today's world to make time for yourself, but I do love taking my son to the park in the evenings if I don't get home too late. Watching him play and just be a kid brings so much joy and happiness to my heart; I love what I do because I do it for Jace and my husband." -cwr

We're Texas

The Commercial Real Estate Women (CREW) association hosted its 33rd Annual CREW Forum. The informative event was held at the J.W. Marriott Hill Country Resort on Apr. 15 where over 300 real estate, banking, and construction professionals attended various break-out sessions on topics ranging from digital currency to resource resiliency in Texas. This year's theme was "We're Texas...We Make It Happen," presented by **Tom McDonnell**, Energy Solutions Energy Transition and Development Sr. Director - **Holt Group**;

and **Natalie Johns**, Alternative Energies & Infrastructure Director - **Dudley Land Company** who educated the attendees on the sustainability of Texas resources. -cwr



L-R: Natalie Johns and Tom McDonnell

Keep up the good work!

MEMCO Staffing is delighted to congratulate **Luciano Herrera**, March 2026 Employee of the Month at Memco SA, on his remarkable dedication and hard work, which are sincerely valued and acknowledged.



Build-To-Rent



Catamount Constructors Inc. of San Antonio was honored to be part of an important conversation about build-to-rent housing last week at NexMetro's Avilla Buffalo Run in Commerce City, Colorado. Built by Catamount in 2019, Avilla Buffalo Run was one of the first BTR communities in the state.

Alongside U.S. Secretary of Housing and Urban Development **Scott Turner**, U.S. Representative **Gabe Evans**, and industry leaders from National Multifamily Housing Council and AGC of Colorado, they had the opportunity to highlight how build-to-rent communities are expanding housing choices and strengthening communities across the country.

Always advancing

The American Concrete Institute (ACI) announced its 2026-2027 president. As elected by the ACI membership, **Scott M. Anderson** will serve as ACI president in 2026-2027.

Scott M. Anderson, FACI, is Vice President and General Manager of **Keystone Structural Concrete** (Keystone), a concrete contractor based in Houston, TX. Keystone is part of the **Stewart Holdings Group**, a family of companies providing a full range of concrete construction services throughout the Houston, Austin, and San Antonio markets. Anderson has overseen Keystone's elevated formed concrete construction operations since 1999.

Anderson was Chair of the ACI Financial Advisory Committee and is a member of ACI Committees E703, Concrete Construction Practices; 134, Concrete Constructability; and Joint ACI-ASCC Committee 117, Tolerances. He previously served on the ACI



President, Scott Anderson

Construction Liaison Committee. During his term as ACI Vice President, he chaired the task group responsible for updating ACI's Strategic Plan, which guides the Institute today.



JCH CONSTRUCTION, INC.

Specializing In
Backhoe • Rocksawing • Trenching

"We Can Dig It"

(210) 651-5612 Fax: (210) 651-5451
16701 IH-35 North Selma, Texas
Visit us at www.jchconstructioninc.com



MOWER MADNESS
SPRING SALES EVENT | 2026

GET A DEAL. GET IT DONE.

Hurry into your local dealer to save with financing AS LOW AS 0% or HUGE CASH REBATES on new zero-turn mowers. Visit www.bobcatce.com/mower-madness to see the date of your local event. We'll be offering the deepest discounts of the year on Bobcat mowers. With 18 convenient locations from the Texas panhandle to the Rio Grande Valley, your local Bobcat dealer is never far from your jobsite.

Bobcat of San Antonio
(210) 337-6136

Bobcat of Buda
(512) 884-5533

Bobcat of Marion
(830) 420-9020

Bobcat of Pleasanton
(830) 580-4020



QUALITY FENCE & WELDING

check us out at



210-545-6767

License # B15629



LEGAL



When Products Fail in Extreme Weather: The New Liability Trap for Contractors

Shelly Masters
Principal
Cokinos Young
Austin, Texas

Extreme heat, deep freezes, and record rainfall are no longer “once-in-a-generation” anomalies. They are becoming regular events that expose weak links in building envelopes, mechanical systems, and hybrid products that combine materials, adhesives, coatings, and other chemicals. The practical result is more disputes that look like ordinary construction-defect cases involving leaks, cracking, delamination, corrosion, or loss of performance, but are litigated through a climate-driven lens: what conditions were foreseeable, who owned the risk, and what did the contract and warranty actually promise.

Initial contract and plan/specification disputes are often framed around the owner, architect, and engineer teams. But when a building system fails under foreseeable climate stress, owners pivot to a contractor nonperformance theory. *Bartush-Schnitzius Foods Co. v. Cimco Refrigeration* illustrates the shift. The contractor sought payment, but because the refrigeration system could not maintain the contractually required temperatures, the court treated that deficiency as failure of a core performance obligation. The owner’s breach of performance claim became the focal point and undermined the contractor’s nonpayment claim. The contract made temperature performance the essential benefit of the bargain, and delivering it was the contractor’s responsibility.

Warranty language has become even more critical because product performance disputes increasingly get pushed back onto the contractor. Owners want long-term durability, but climate-driven failures often surface later as latent or progressive defects, such as water intrusion behind a façade, seal failures inside units, roof systems that appear sound until a heatwave, or materials that fatigue after repeated freeze-thaw cycles. Two themes matter most. First, long warranties can extend exposure far beyond what manufacturers intended, and they can bind the contractor if the contract language adopts or expands those promises. *Christie v. Hartley Construction* shows that an express long-term promise can override typical statute of repose protections. Second, warranty language does not necessarily eliminate exposure for latent failures that are not reasonably discoverable. Courts focus on what the parties promised and what was reasonable, and what is considered reasonable keeps expanding as extreme weather becomes more foreseeable.

HTRF Ventures v. Permasteelisa is a cautionary example for façade and high-performance building envelope contracts. There, the court read a design-build subcontract as imposing an independent obligation that effectively captured a ten-year performance requirement, beyond a simple pass-through of a manufacturer’s warranty. For contractors and subs, the takeaway is to separate workmanship/installation warranties from manufacturer product performance warranties in writing, avoid incorporation language that automatically expands the contractor’s warranty period to whatever appears in the specs, and make manufacturer warranty issuance a closeout deliverable directly to the owner. Otherwise, courts may treat the contractor as the guarantor when the product fails years later.

Climate stress also reshapes the product-liability conversation. Many states impose strict liability for defective products that are unreasonably dangerous, and the core fight becomes whether the product was designed for its foreseeable climate. *Bennett v. CMH Homes* is a useful analog, where the court treated heat exposure as a foreseeable condition for exterior siding and allowed design-defect theories to proceed. Manufacturers will argue misuse or “conditions outside the intended range,” while claimants will point to marketing, typical exterior exposure, and modern weather data. As weather data changes, so does what is “foreseeable.”

Another problem area is whether a contractor becomes a “seller” when it supplies and installs a product, particularly on turnkey projects. Some states pull installation contractors into the distribution chain by statute, which changes early case strategy entirely. Prompt tender to the manufacturer, a clear record of who selected the product, and documentation that the installer did not control the alleged defect are key to defending contractor liability.

Insurance is often the real battleground once pleadings are filed. Coverage can turn on how causation is framed, such as a sudden event loss versus deterioration, workmanship, or maintenance, and exclusions and endorsements can eliminate coverage contractors assume they have. What defines an “occurrence” remains a nationwide split, although cases like *Lamar Homes* in Texas reflect the broader trend of recognizing an occurrence where unintended property damage results.

See **LEGAL**, page 17

INSURANCE



Weather Risks Reshaping Construction Insurance Across Texas

Joe Smith
Producer
Walker Insurance Group
Tyler, TX

Severe weather is no longer an occasional disruption for Texas construction firms—it’s becoming one of the most significant drivers of project risk, insurance costs, and scheduling uncertainty across the state. From Central Texas hailstorms to Gulf Coast hurricane exposure, contractors are facing a rapidly evolving insurance landscape as carriers respond to increasing catastrophe losses.

Hail Leading the Losses in Central Texas

Hail damage has emerged as one of the most frequent and costly insurance claims for construction sites across the I-35 corridor, including Austin, San Antonio, and New Braunfels.

Projects in early stages—particularly roofing, solar installation, and exterior finishes—are especially vulnerable. “A single hailstorm can wipe out weeks of progress overnight,” said a regional risk advisor familiar with Central Texas projects. “We’re seeing more builder’s risk claims tied to hail than almost any other weather event.”

Insurers are responding by:

- Increasing deductibles for hail-related claims
- Adding stricter coverage exclusions
- Requiring enhanced site protection measures

Flooding and Rain Events Disrupting Jobsite Timelines

Flash flooding and prolonged rain events are creating major complications for contractors, particularly in fast-growth like Comal and Hays counties.

Heavy rainfall impacts include:

- Site access delays and lost workdays
 - Equipment damage and erosion
 - Foundation and trench instability
- Floodplain construction is drawing increased scrutiny from insurers, with many policies now requiring:
- Detailed drainage and water mitigation plans
 - Elevated coverage premiums for at-risk zones
 - More stringent underwriting reviews before policy issuance

Wind and Storm Events Increasing Structural Risk

High winds—often associated with spring storms and tropical systems—are another growing concern, particularly for:

- Crane operations
- Steel erection phases

- Scaffolding and temporary structures

Wind-related claims frequently involve partial structural damage, which can trigger complex insurance disputes over:

- Fault vs. “act of God” determinations
- Contractor liability vs. policy coverage
- Delays and liquidated damages

Insurance Market Tightening for Contractors

Across Texas, insurers are tightening underwriting standards in response to repeated catastrophe losses.

Contractors are now seeing:

- Higher premiums year-over-year
- Reduced policy limits in high-risk regions
- Increased documentation requirements

Builder’s risk policies, in particular, are undergoing significant changes, with carriers demanding:

- More detailed construction schedules
- Weather mitigation strategies
- Stronger subcontractor risk controls

What Contractors Should Be Doing Now

Industry experts say proactive risk management is becoming essential—not optional.

Key steps include:

- Implementing weather response plans for active job sites
- Securing materials and equipment ahead of storm events
- Reviewing insurance policies for coverage gaps
- Coordinating closely with brokers and carriers early in project planning

Outlook: Weather Risk Now a Core Business Factor

As Texas continues to lead the nation in construction growth—spanning data centers, infrastructure, energy, and commercial development—weather-related risk is becoming a central factor in project planning and execution.

For contractors, understanding how hail, flooding, wind, and hurricane exposure affect insurance coverage is no longer just a back-office concern—it’s a critical component of staying on schedule, on budget, and protected in one of the most active construction markets in the country.

ACCOUNTING



How the oil shock is rippling through the global economy

Joe Brusuelas
Chief Economist
RSM US LLC
Austin, TX

Even with the two-week ceasefire announcement on April 7, the energy shock triggered by the outbreak of war in the Middle East threatens another bout of inflation and demand destruction.

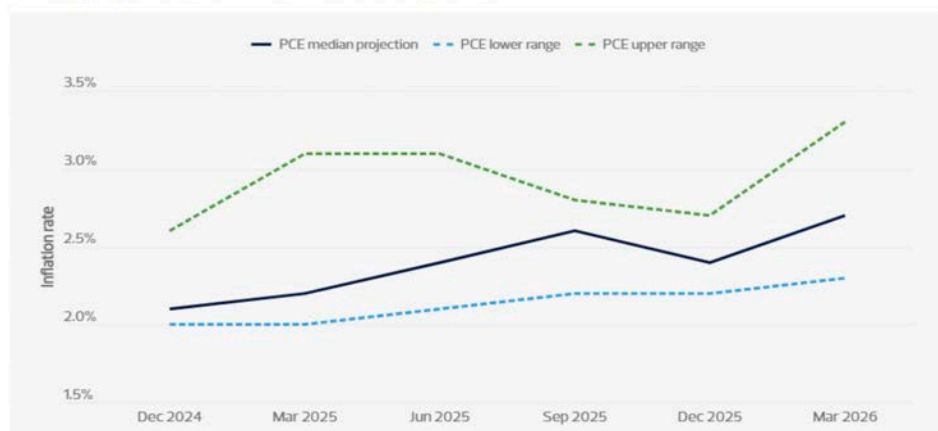
The Federal Reserve's most recent Summary of Economic Projections reflected considerable uncertainty. Those projections accompanied the Federal Open Market Committee's decision at its March meeting to maintain its policy rate within a range of 3.5% to 3.75%.

The FOMC's decision came despite higher median expectations for economic growth and projections that inflation would remain considerably above its 2% target.

The SEP now estimates that the personal consumption expenditures index inflation rate, the Fed's preferred measure of inflation, will increase in the fourth quarter to 2.7%, with core PCE inflation, which excludes food and energy, also increasing to 2.7%.

That outlook marks an increase from the FOMC's estimates in December, when it forecast a range of 2.2% to 2.7% for both the top-line PCE inflation rate and the core measure.

FOMC projections for PCE inflation in Q4 2026*



We anticipate the top-line inflation rate will increase to between 3.5% and 4%, which will carry with it second- and third-order effects that will transmit to households over the next six months even if the conflict ends soon.

Food, fuel and utilities have formed our baseline for assessing inflation's impact on American households since the pandemic. Those prices are either increasing now, as with the cost of fuel, or will soon, as with food and utilities. While we do not think the price of oil has spiked enough to cause a recession, its elevated level will create a drag on growth and hurt sentiment.

State of play

Households are focusing on inflation as the cost of gasoline rises at the pump.

This very visible sign of rising inflation is on top of a micro shock occurring across the global food chain due to producers' financial exposure to nitrogen fertilizers and other petrochemical inputs that also feed into metals and technology supply chains. The result will be higher prices for many essential consumer goods.

We will experience, at a minimum, a short-term affordability shock that will restrain consumption and growth. Even if it does not trigger an end to the business cycle, it will take a toll on the economy, and will be felt in three ways.

First-order effect: Energy prices

The first-order effect of the energy crisis is the increase in energy prices. By the time oil shipments out of the Middle East were halted, U.S. households were already competing with increased electricity demand from data centers, pressure that persisted even as gasoline prices were moderating.

The rise in the price of crude oil pushed up the cost of gasoline by nearly a dollar a gallon on average, from \$2.80 in January to \$3.79 in mid-March.

Second-order effect: Intermediate goods

The second-order effect is the increased cost of intermediate goods, including their transportation by land, sea or air, which raises costs for businesses and household recreation.

Every product ends up on a truck at some point, and either the business owner or the customer eats the increased cost. This goes for restaurants, clothing stores, grocery stores and manufacturers that pay to ship materials to the U.S. by boat and then deliver them domestically by truck.

There are numerous examples beyond the cost of driving a car.

The cost of bunker fuel that powers ocean shipping increased by 21% from January through mid-March on a weighted average basis as measured by Bloomberg; the Singapore spot price surged by 164%.

The cost of aluminum increased by 17% this year through mid-March. And the diminished supply of helium—a byproduct of liquefied natural gas, with Qatar producing a third of the global supply—will have a knock-on effect on the production of computer chips.

Third-order effect: Food

The third-order effect is the human cost that the shortage of petroleum-based fertilizer imposes on global and local populations. Petroleum-based fertilizers release nitrogen into the soil, increasing crop yields. A shortage of petroleum will raise the cost of fertilizers, leading to possible shortfalls of food, whether it comes from Pennsylvania or Ukraine.

While food's increased price is felt in high-income households, it is devastating for poorer communities.

And while the U.S. has over the years tried to ameliorate the effects of energy shortages, neither the restrictions imposed during the 1970s oil embargoes nor the more recent petroleum reserve releases have worked out all that well.

Measuring affordability

Although delayed by a month, February data in the consumer price index—collected before the war began—shows what households were already facing.

Outside of rents, which account for 35% of the total expense categories tracked by the CPI, daily household attention is focused on the cost of food, which accounts for 14% of the CPI, and energy, which accounts for 6%.

Comparison of prices of common household goods before tariffs and before the Iran war*

Items	April 2025	Feb 2026	Price change	Percentage change
All Items CPI				2.2%
Steak	\$12.33	\$14.19	\$1.87	15.1%
Chocolate chip cookies	\$4.96	\$5.26	\$0.3	6%
Romaine lettuce	\$2.92	\$3.56	\$0.65	22.1%
Coffee	\$7.54	\$9.46	\$1.92	25.5%
Gasoline	\$3.47	\$3.21	-\$0.25	-7.3%
Piped gas	\$1.63	\$1.75	\$0.12	7.6%
Electricity	\$0.18	\$0.19	\$0.01	4.4%

Source: U.S. Bureau of Labor Statistics; Bloomberg; RSM US LLP

* Prices reflect CPI average price and index conventions.

While the overall inflation rate stayed at 2.4% in January and February, when the cost of coffee exploded by 25% in the months after the tariffs were imposed last April and a head of romaine lettuce climbed by 22%, people took notice.

Through mid-March, it was costing households 7.6% more to cook or heat their home with natural gas and 4.4% more for electricity, with demand from data centers competing for supply.

These pricing dynamics are not lost on households.

The takeaway

We do not expect inflation to stay at levels from January and February. We anticipate a sharp jump in the CPI to at least 3.5% over the next two months.

The first- and second-order effects of an energy crisis are energy costs and the availability and prices of intermediate goods. The third-order effect is a global shortage of food as increased fertilizer costs lead to reduced crop yields.

Policymakers, economists and strategists must be forthright about how the oil and energy shocks will affect consumers.

Downplaying the risks at a time when the public is already challenged by increased costs is a recipe for inflation expectations to become unanchored, which will create the conditions for another persistent and potentially destabilizing round of inflation.

MAY

2 – Sheri Kitchen / ARI
 3 – Bill Gellhausen / Frankenmuth Surety
 3 – Chris Parker / Middleman Construction
 8 – Kendall Durham / Performance Equipment Service
 10 – Don Watson / Core Electrical Group
 11 – Robert Perez / Middleman Construction
 12 – Zeke Jones / Structure Tone SW
 14 – Fernando Keller / Pro Landscape Solutions
 14 – Cyndi Mergele / RSM
 14 – Lisa Salvatore / CFS Forming
 15 – Rhondie Kanning / Dumas
 15 – Tonya Hall / Tezel & Cotter Air Conditioning Company
 18 – Angie Gonzalez / J.R.'s Plumbing
 19 – Ray Fehner / KCM Cabinets
 19 – Stacey Quesenberry / Middleman Construction
 25 – Urs Senser / BrandSafway
 28 – Adam Hudec / Marksmen General Contractors
 29 – Adolph Fierros / Joeris General Contractors

Know someone celebrating a birthday next month? Let us know!
 Email Andi Mathews, andi@constructionnews.net

Association Calendar

Content submitted by Associations to Construction News

ABC

Associated Builders & Contractors
South Texas Chapter

May 5: Membership Committee Meeting, 9-10am, ABC Office, 814 Arion Parkway, Ste., 111, San Antonio

May 12: Construction Industry Job Fair & Career Expo, 8am-12pm, Workforce Solutions Alamo-O'Connor, 11711 I-35 N. Ste., 170, San Antonio

AGC

Associated General Contractors
San Antonio

May 5: Bexar County Roundtable, 8-9am
May 7-8: Steel Toe Showdown Fishing Tournament, Fulton Convention Center (Paws & Taws), 402 N. Fulton Beach Rd., Rockport

May 14: CLC Cornhole Tournament benefitting Light the Night, 4-8pm, AGC Office Parking Lot, 10806 Gulfdale St., San Antonio

ASA

American Subcontractors Association
San Antonio

May 7: Free Safety Update, 11:30am
May 12: Free Webinar: Navigating Generational Differences in the Workplace 11am

May 14: Free Tacos & Training: Bonds, 8:30am / FREE for ASA Members

May 14: Baseball Night, ASEBALL NIGHT, 7:05pm, Wolff Stadium, Fiesta Deck

May 19: Free Webinar: ASA National Annual Business Meeting, 1pm

May 19: Spring Golf Tournament, 8am, Hyatt Hill Country Golf Course

May 20: ASA Young Professionals Lunch Meeting, 11:30am

GSABA

Greater San Antonio Builders
Association

May 19: Board of Directors Meeting, 11:30am-1pm, Please RSVP for lunch

May 19: New Member Orientation, 1-2pm, GSABA Ballroom, 3625 Paesano's Pkwy., San Antonio

May 21: Membership Mixer, 4-7pm, Builders FirstSource, 7218 N. Loop 1604 E, Ste., 108, San Antonio

HCA de SA

Hispanic Contractors Association

May 4-5: OSHA 10, HCA de SA Office

May 6-7: OSHA 10, General Industry, HCA de SA Office

May 14: Roundtable with the HCA de SA & Bartlett Cocke General Contractors, 9:30am

May 21: HCA de SA Safety First, Safety Fair, 8am, Northeast Lakeview College

IEC

Independent Electrical Contractors

May 4: 6th - IEC National Policy Conference

May 12: A&T Committee, 11am

May 16: Electrical Maintenance Technician Class - \$175 Per Person, 8am-5pm

May 19: Board of Directors Meeting, 11am

May 25: Memorial Day - IECGSA Offices Closed

May 29: 18th Annual Sporting Clay Fun Shoot, 1pm Shotgun Start

MCA-SMACNA INC

Mechanical Contractors Association
Sheet Metal & A/C Nat'l Association

May 13: MCA-SMACNA Regular & Associates Meeting, 11:30am, The Petroleum Club, 8620 N New Braunfels Ave # 700, San Antonio

May 21: 32nd Annual MCA-SMACNA Golf Tournament, 1pm Shotgun Start, SilverHorn Golf Club, 1100 W Bitters Rd, San Antonio

May 27: Joint Industry Fund Meeting, 11:30am, MCA-SMACNA Office, 206 E. Nakoma, San Antonio

NAWIC

National Association of Women in
Construction San Antonio

May 6: Industry Appreciation Night, Byrne Construction Services, 5851 Sebastian Pl, San Antonio

PHCC

Plumbing Heating Cooling
Contractors Association

May 7: PHCC-SA 13th Annual Golf Tournament, 8:30 am Shotgun Start, Northern Hills Golf Course Venue, 13202 Scarsdale SA, TX 78217, RSVP to events@phcc-sanantonio.org

TACCA

Texas Air Conditioning Cooling
Contractors Association

May 20: 33rd Annual Sporting Clay Shoot, 11:30am-5:30pm, National Shooting Complex, 5931 Roft Rd, San Antonio



Powered Leadership



New Braunfels Utilities (NBU) was proud to welcome the New Braunfels High School JROTC cadets and instructors to our Service Center this morning for an inside look at the impact of our Conservation, Electric Operations, and Water Operations teams. As part of their Leaders Camp, these cadets and future leaders spent the morning learning, engaging, and exploring the many career pathways within the utilities industry—and we were honored to be part of that journey. A special thank you to our Control Center and Security teams for going above and beyond to make this experience possible on a Saturday. We appreciate your support! We're especially grateful to Samara, Alyson, Dakota, Nate, Aristan and Robert for sharing your personal stories and NBU career journeys with the cadets, your authenticity and insight left a lasting impression. Engagements like this matter. We look forward to continuing to invest in and inspire the next generation as they begin shaping their professional paths.

LEGAL con't

Scheduling delays are increasingly common due to climate-related events. Extreme rainfall, deep freezes, and heat stoppages drive delay claims, but contractors still must prove the event was unusually severe for the location and that it affected critical path activities, including long-lead materials. Weather benchmarking provisions tied to objective historic data are appearing more often because they reduce hindsight fights over what was "normal." Following the contract's notice and documentation requirements remains essential, especially when owners demand acceleration after excusable delay.

Worker safety is another area where "extreme" is becoming standard.

Federal law increasingly supports heat illness prevention programs through OSHA, and some states impose more detailed temperature rules. Contractors should treat the most developed state-plan requirements as the benchmark for site plans, training, and documentation.

Climate stress is turning ordinary product performance into higher-stakes, multi-party litigation. The most practical risk controls are front-end: define climate assumptions in the contract, separate workmanship warranties from manufacturer performance warranties, align insurance and tender strategy between parties, and document submittals, product specifications, weather impacts, and maintenance records in a way that will survive a claim years later.

PRO-LINE PAVING LLC

**ASPHALT PAVING
ASPHALT REPAIR
ASPHALT MILLING
LINE STRIPING**

**ASPHALT OVERLAY
SEAL COATING
TRAFFIC SIGNAGE
THERMO PLASTIC STRIPING**



www.prolinepaving.com
YOUR FULL SERVICE COMPANY!
"Over 20 Years Experience"

ESBE SBE 213055107

**1-800-ASPHALT
210.530.0062 • FAX 530.0064**

MIKE & MARK CRAWFORD
P.O. Box 791324 SAN ANTONIO, TX 78279-1324
EMAIL: estimating@prolinepaving.com

BUYERS BARRICADES

**24/7 TRAFFIC CONTROL
SERVICE | SALES | RENTAL
BUYERSBARRICADES.COM**

Texas Aggregates & Concrete Association Joins Governor Abbott at CIM Gala to Celebrate Workforce Development in Construction Materials

Leaders from across Texas' Construction materials industry gathered at the Texas State University Concrete Industry Management program's (TXST CIM) Scholarship Gala Apr. 23 in San Marcos to celebrate its mission of advancing education, workforce development and leadership in the sector. The CIM program, through the help of its National Steering Committee and Patron's Board Foundation, provides more than \$100,000 in scholarships to TXST CIM students annually to pursue high-demand careers in the aggregates, concrete and cement industry.

Gov. Greg Abbott, Texas State Sen. Pete Flores and other industry leaders joined members of the Texas Aggregates & Concrete Association (TACA), including TACA President & Chief Executive Officer (CEO) Andrew Pinkerton, in recognizing the program's growing impact across Texas.

The CIM program provides students with specialized education in aggregates, concrete and construction materials, connecting classroom learning with real-world industry experience. Five universities in the United States offer a CIM degree program, including Texas State University, alongside programs in Tennessee, New Jersey, South Dakota and California.

Abbott highlighted the importance of workforce development programs like CIM in supporting Texas' continued economic expansion and infrastructure growth. "This program transforms the lives of everybody it touches. CIM graduates have 100 percent job placement and earn the highest salary of any degree on campus. CIM graduates don't just pour foundations; they become foundations

that form the future of the great state of Texas."

Flores highlighted the critical need to strengthen the state's workforce pipeline. Drawing on his own story – growing up in Laredo and beginning his career as a young game warden before rising to the Texas Senate – Flores encouraged students to recognize the opportunities ahead.

He emphasized that CIM students are stepping into a workforce demand that has too often gone unmet and reinforced that the only limits on their future are the ones they place on themselves. Flores also spent time engaging directly with students before and after the program, underscoring the importance of mentorship and industry connection.

TACA member companies have long supported CIM through scholarships, mentorship and industry engagement, helping ensure a strong pipeline of talent to meet the demands of one of the nation's fastest-growing states.

"CIM is helping build the next generation of leaders who will quite literally shape the future of Texas," said Pinkerton, who serves on the CIM's National Steering Committee. "As our state continues to grow, the need for a skilled, well-trained workforce in construction materials has never been more critical. We are proud to support a program that is preparing students for meaningful careers in an industry that underpins every community in our state."

Added Pinkerton: "As Texas leads the nation in growth, it is programs like CIM that ensure we have the workforce ready to build what comes next."



Gov. Abbott with TACA President Andrew Pinkerton and TACA members at the CIM Scholarship Gala



Texas State Sen. Pete Flores (middle in cowboy hat) with TACA President Andrew Pinkerton (second to the right) and TACA members at CIM gala

Safe Actions Save Lives



The **Buyers Barricades** team banded together to celebrate Work Zone Awareness Week in their matching shirts. Stay safe out there.



Grand Marshal Ready



Howell Crane & Rigging, Inc. doing their part to make FIESTA & the Texas Cavaliers River Parade another success!

Serving South Central Texas since 1980 as a Major Source for Commercial Building Materials & Supplies

LYNWOOD
BUILDING MATERIALS, INC.

210-477-3000
Fax 477-3090

DOWNTOWN
Off IH-10 @ Colorado Street
1146 W. LAUREL

Toll Free 1-800-580-9052 www.lynwoodsa.com

RIVER CITY BOLT & SCREW
Construction and Industrial Fasteners & Supplies

FASTENERS
THREADED ROD & STUDS
STRUCTURAL BOLTS
ANCHOR BOLTS
WELD STUDS
ABRASIVES
SAFETY SUPPLIES
CUTTING TOOLS
FITTINGS
FASTENER ASSORTMENTS

5306 Jackwood Drive
San Antonio TX 78238
Phone #: 210-999-5721
Email: sales@rivercitybolt.com
Website: www.rivercitybolt.com

Every worker should come home safe



Representatives from the American Subcontractors Association (ASA) recently attended the Workers Memorial hosted by the Occupational Safety and Health Administration (OSHA), an event dedicated to honoring workers who have lost their lives on the job.

The memorial was a deeply moving experience, as families of the victims shared personal stories of loss, resilience, and remembrance. Each name of a fallen worker was read aloud, accompanied by the solemn toll of a bell—an emotional tribute that underscored the human impact behind workplace tragedies.

The ceremony served as a powerful reminder that workplace safety is not just a policy, but a responsibility shared

by every individual and organization. Each life lost represents not only a worker, but a family member, friend, and valued member of the community.

ASA was also honored during the event for its contribution to the memorial site, including the donation of a memorial tree and reflection bench located in the Texas A&M Engineering Extension Service (TEEX) courtyard. This space will provide a place for ongoing reflection and remembrance for years to come.

Events like the Workers Memorial reinforce the importance of continued vigilance, education, and collaboration across the construction industry to ensure that every worker returns home safely at the end of the day.



ABC South Texas
Associated Builders and Contractors

MAY LUNCH & LEARN

BUILDING A BETTER TOMORROW

Lori Green ACRISURE For All We Rise Shane Hutson PESADO Impact Water

Hear their Stories Learn their Why Be Inspired

ABC OFFICE
May 26th, 11:30 AM

Members \$25 / Future Members \$40
Sponsorships Available

Scan to Register

YOUR AD HERE

Advertise with Construction News!
Call Haley today at 830-500-0071

San Antonio Construction Surge Continues into May

Infrastructure, Industrial Expansion, and Urban Redevelopment Drive Strong Market Activity Across Central Texas

By Construction News Staff

URBAN REDEVELOPMENT GAINS TRACTION

Construction activity across the San Antonio region continues to accelerate in May 2026, with major infrastructure expansions, industrial developments, and urban redevelopment projects shaping one of the most active building environments in Texas.

From billion-dollar highway expansions to large-scale manufacturing facilities and adaptive reuse downtown projects, contractors are seeing sustained momentum fueled by population growth and regional economic expansion.

INFRASTRUCTURE DOMINATES PIPELINE

The most significant activity remains concentrated in transportation infrastructure, led by the ongoing expansion of Loop 1604. The project continues to widen lanes, reconstruct interchanges, and improve congestion along one of the city's most critical corridors.

Meanwhile, the I-35 NEX program continues progressing through multiple phases, with central corridor work advancing toward a projected 2027 completion and additional phases extending into 2028.

INDUSTRIAL SECTOR DRIVES HEAVY CONSTRUCTION DEMAND

San Antonio's industrial sector is seeing significant investment, highlighted by the construction of a new 1 million-square-foot manufacturing facility for JCB on the South Side. The project is on track for completion in late 2026 and is expected to generate long-term demand for suppliers and subcontractors.

Developers are increasingly shifting toward adaptive reuse projects in the urban core. A planned conversion of a downtown office tower into a 301-room JW Marriott hotel represents a \$164 million investment and reflects broader trends in repositioning office assets into hospitality and mixed-use developments.

MULTIFAMILY AND MIXED-USE PROJECTS EXPAND

Multifamily and workforce housing developments remain active as population growth continues to drive demand. New projects near downtown and along Loop 1604 corridors are helping meet housing needs while supporting retail and service expansion.

RETAIL CONSTRUCTION REMAINS STEADY

While large-scale retail projects have slowed, neighborhood retail centers continue to move forward in high-growth areas. These developments are creating consistent opportunities for general contractors and tenant finish-out crews.

MARKET OUTLOOK

With continued population growth across Bexar County and Central Texas, demand for infrastructure, housing, and commercial development is expected to remain strong through 2026 and beyond.

Contractors across heavy civil, industrial, and commercial sectors are well-positioned to benefit from a steady pipeline of public and private investment.

YOUR ONE-STOP SHOP

Our service plans are customized for your one-time project or ongoing construction needs.

OUR SERVICE:

- Dumpster Rentals
- Heavy Hauling
- Asbestos Hauling
- Half-round End Dumps, Mid-sized End Dumps, High-Side Trailers

CONTACT US

- 210.384.1328
- RaintreeTransport.com

RAINTREE TRANSPORT
DUMPSTERS | HEAVY HAUL | TRUCKING

Leadership Transition

Zachry Construction Corporation announced the appointment of **Travis Mross** as president, continuing to build on its long-term growth strategy across critical infrastructure markets.

Mross began his journey with Zachry Construction as an intern in 2000 and served as executive vice president for the past six years. With a love for the people and the work, Travis helped shape the company's strategic direction, strengthen operations, and advance initiatives that support consistent performance across the business.

"Travis has been instrumental in setting our course and building the strong trajectory we are on today," said **David Zachry**, CEO of Zachry Construction Corporation. "He understands our business deeply and has helped elevate the discipline, accountability, and execution that positions us for continued success. I'm confident Travis is the right leader to guide Zachry Construction into its next chapter."

As president, Mross will lead Zachry Construction's focus on operational excellence, client service, and predictable delivery across its transportation, water, underground utility, and civil sitework operations. His key priorities include a continued focus on strategic growth and operational excellence, business consistency, developing our team members and strengthening our culture all while maintaining an innovative and gritty mindset.

The announcement comes as demand remains strong across



transportation, water, and civil infrastructure, while owners are placing increased value on certainty of schedule delivery, transparency, and disciplined execution on large, complex projects. Zachry recently reinforced that focus through its acquisition of Crescent Constructors, expanding the company's capabilities in water and wastewater plant infrastructure.

"As demand for critical infrastructure continues to grow, our job is to bring consistency, discipline, and a high standard of execution to every project," said Travis Mross, president of Zachry Construction Corporation. "That focus will continue to guide how we serve clients and grow the business."

With more than a century of experience delivering complex infrastructure, Zachry is positioned for continued growth in markets where safety practices, technical expertise, strong project controls and management, and reliable outcomes are increasingly important.

In memoriam....

Arnold Alfred "Fred" Moos, age 85, passed away peacefully on April 13, 2026. He was born on September 23, 1940 in a home in New Braunfels, Texas, the only child of Arnold V. and Kathlyn Schertz Moos.

Fred attended Mount Sacred Heart, then graduated from New Braunfels High School in 1959. After 4 years of courtship, Fred married his sweetheart, Angeline Scheel on April 15, 1961 in the original church at Our Lady of Perpetual Help in Selma and are still active parishioners to this day. They have remained living on the same homestead that they first moved onto 65 years ago.

He began working full-time 6 months after graduation at Acme Butane Company, now known as Arnold Moos Company, along side his Dad who founded the company. His sons, Steve and Jim later joined the company. Since his retirement in 2011, Jim has continued the company.

Fred was in the National Guard for 8 years; active member of the Bracken Volunteer Fire Department, serving as Fire Chief for 9 years and Board President for 18 years. He also was Crew Chief for the Bracken Bazaar and Shift Captain for the Kartoffel Puffer Booth at Wurstfest; was a



member of the St. Michael's Society where he cooked for the OLP Church festival and chicken dinner for many years; enjoyed 9-pin bowling at Cibolo and Bracken Bowling Clubs; served 29 years as a Board Director for Schertz Bank and Trust. His greatest accomplishment was earning his private pilot's license in 1976, then owning his own Beechcraft Musketeer. Later, upon selling his plane, Fred bought his John Deere 450H Bulldozer and many tractors which cultivated his love for farming. He also enjoyed clearing land, digging tanks, cutting and bailing hay. When he wasn't farming or bulldozing, he was enjoying his lifelong loves of hunting and fishing with many friends and family.



www.pipelineintelligence.com

Two publications that have an up-to-the-minute quick reference listing of your upcoming pipeline and renewable projects around the US & Canada

Ashley Mohn

Vice President

281-499-3131

www.windsolarintelligence.com



THE EXIT PLANNING COACH®



SELL TO YOUR EMPLOYEES

Many Owners are unaware of the benefits of an employee sale.

- Get full market value
- Choose your time frame
- Maintain control until you leave
- Partial, staged or full transfer at your option

If you are thinking about selling in 3 to 10 years, and have employees who could run the business, a Management Buy Out or Employee-Owned Trust can provide flexibility and control. A Worker Co-op or ESOP may also create substantial tax benefits.

Preserve your legacy while creating liquidity. We specialize in helping construction related companies navigate the path to a new generation of ownership.

Take our 15-minute Assessment and we will schedule a complimentary video interview to help you understand your options. There is no obligation.



The Exit Planning Coach
John F. Dini, CExP, CEPA, CBEC, CEMC
President MPN Inc.
jdini@mpninc.com | (210) 615-1800

Advising San Antonio business owners since 1994.

HOLT Used

**USED
FEELS
NEW
AGAIN™**



HOLTUSED.COM

**EQUIPMENT FOR ANY JOB.
FINANCE YOUR PURCHASE.
SHIPPING AVAILABLE WORLDWIDE.**

