



Austin

CONSTRUCTION NEWS

The Industry's Newspaper

HAPPY FATHER'S DAY



www.constructionnews.net ★ (830) 500-0071 ★ Volume 26 ★ Number 6 ★ JUNE 2026

Building Greener Futures



Balfour Beatty was proud to once again join their partners at *Perkins&Will, Sherwin-Williams, Encotech Engineering Consultants, Coleman & Associates, Texas Disposal Systems, EMA* and Austin ISD students and staff for the annual U.S. Green Building Council (USGBC) Texas Green Apple Day of Service.

Together, volunteers sanded and painted new picnic tables for several Title I Austin ISD schools and repaired existing tables at Navarro Early College High School, helping create more opportunities for outdoor learning and connection.

In addition to supporting materials, our team was grateful for the opportunity to give back through hands-on service: bringing time, tools and energy to support local students and school communities.



Bringing sustainable growth



In a small garage in Uttoxeter, Staffordshire, United Kingdom, **Joseph Cyril Bamford** founded **JCB**, a global powerhouse in equipment manufacturing, in 1945. Privately held and family-owned, JCB evolved into a leading manufacturer of equipment serving the construction, agricultural, waste management, demolition and power system sectors. Maintaining a robust global presence, JCB operates 22 manufacturing facilities across four continents and serves over 150 countries, employing approximately 14,000 individuals worldwide. It supports an extensive dealer network, including more than 750 dealers and over 2,000 depot locations. Cumulatively, JCB has sold more than one million machines globally and continues to expand its footprint, particularly in North America.

In 1953, JCB invented the backhoe loader. The iconic machine remains synonymous with the company's

legacy. Today, one in every three backhoes sold globally carries the JCB name, underscoring its leadership in the category. The company also broke new ground with the invention of the telehandler, setting a global standard for jobsite material handling.

Continuing the spirit of innovation, JCB launched the Teleskid in 2017, the world's only skid steer loader with a telescopic boom. Designed and exclusively manufactured at JCB's North American headquarters in Savannah, Georgia, the Teleskid delivers unmatched versatility on the jobsite, allowing operators to lift higher, reach further and dig deeper than any other machine in its class. The Teleskid stands as a testament to JCB's commitment to developing purpose-built, regionally relevant equipment.

In 2020, JCB unveiled the world's first fully electric mini excavator in 2020. Advancing its sustainability

leadership, JCB most recently developed the industry's first hydrogen-powered internal combustion engine, a breakthrough that holds transformative potential for zero-carbon construction and agricultural equipment.

Lord Anthony Bamford, Joseph's son, has served chairman of JCB since 1975. He has presided over the prolific global expansion of a brand that stands for strength, durability and reliability in products ranging from 46-ton tracked excavators to children's toys and DIY equipment. "Construction equipment manufacturers sell more than 300,000 machines every year in North America, making it the single largest market in the world. JCB has been growing its share of this important market steadily over the past few years, and the time is now right to invest in our manufacturing capacity in North America, where we already have one factory," continues Lord Bamford.

Continued on Page 3

Milestone Moment

Bartlett Cocke General Contractors was excited to break ground on the new Taylor, Texas - Municipal Government City Hall & Justice Center, a 60,000 SF facility that will support the city's growing needs and provide a space for civic services and public safety. The project includes a two-story police department with everything from patrol operations to dispatch and evidence processing, built to serve and protect the Taylor community for years to come.

Projects like this reflect the importance of investing in infrastructure that strengthens communities and supports future growth. Bartlett Cocke is honored to partner with the City of Taylor, Randall Scott Architects, Inc., and their trade partners to help bring this vision to life.



Sean Stevens, Vice President of Operations



Service, Strength & Spark



Twenty-one years ago, **Absolute Power Electrical Contractors** started with a vision, a work ethic, and a whole lot of wire! Today they celebrate 21 years of keeping the lights on for their amazing community. None of this happens without the incredible Absolute Power team and every single customer who has trusted them along the way.

ON THE JOB



JR Ramon Demolition sharing behind-the-scenes looks at a project in Marion—progress in action.



Built in 1938. Still turning heads today



This Caterpillar #33 pull grader carries decades of history and is now cared for by **James Dyche**, a **HOLTCAT** Shop Technician in Corpus Christi. A reminder of how far the equipment—and the people behind it—have come.

Shaping the Future of Construction Leadership

Cokinos Young is building the next generation of industry leaders! **Stephanie Cook** and **Holton Westbrook** had the opportunity to present Important Contract Provisions for Construction Agreements to the Austin Chapter Associated General Contractors (AGC) 2026 Emerging Leaders Program. Their presentation provided valuable insights into key construction contract considerations while engaging with emerging professionals who are helping shape the future of the industry.



Advertisers Directory

Alamo Crane Service	4
Alterman Electric	16
Andrews Myers Attorney at Law	9
Aprio.....	8
Buyers Barricades.....	14
C&C Guide Service	7
City of Austin	5
Compact Equipment/Bobcat	14
KCS	8
Lynwood Building Materials	3
Mary C. Haskin Photography	3
Mission Golf Cars	10
Pipeline Intelligence	11
The Nitsche Group.....	11
TNT Crane & Rigging	15

JCB con't.

The company's vertical integration strategy, including manufacturing many of its own engines and hydraulic systems, ensures a level of quality control and performance reliability that sets JCB apart in the industry. This engineering autonomy enables the company to respond swiftly to changing market demands and upholds its rigorous standards across every product line.

JCB remains a privately held, family-owned company, a structure that fosters agility and long-term thinking. Unlike publicly traded competitors bound by short-term shareholder expectations, JCB benefits from the ability to make bold, strategic decisions swiftly and with a long-range perspective. This independence empowers the company to prioritize innovation, customer relationships and sustainable growth – core values that continue to define the JCB brand worldwide.

JCB began its footprint in the United States in 1970, setting up a base in Maryland, to harness the huge growth opportunity North America offered. The company's North American headquarters opened in Savannah, Georgia, in 2000, where compact equipment for the North American market is designed and manufactured.

In August 2024, JCB broke ground on its second manufacturing facility in North America, right here in San Antonio. It is part of JCB's broader North American Manufacturing Expansion strategy. The project is the single largest investment in the company's 80-year history and is a cornerstone of JCB's commitment to increasing domestic production capacity and reducing supply chain dependency by building closer to its largest market.

At the groundbreaking ceremony, Lord Bamford stated, "JCB really has come a considerable way since we sold our first machine here 60 years ago, and it gives me immense pleasure to see how our business has grown in North America. Today really is a milestone day in the history of our family company." Governor **Greg Abbott** also noted at the groundbreaking ceremony, "Texas was this year named as The Best State for Business for a record-breaking 20th year, and I am proud to welcome JCB as the

newest business to call our great state home. Today's groundbreaking marks a major milestone in JCB's journey that will create 1,500 good-paying jobs for hardworking Texans in Bexar County and bring hundreds of millions of new capital investment to San Antonio and beyond. 'Made in Texas' is truly a powerful global brand, and I look forward to celebrating JCB's continuing success as we work together to build a bigger, better Texas for decades to come."

"This is a large-scale industrial and manufacturing project, specifically designed for the production of heavy construction equipment," says JCB Texas Operations Director **David Carver**. "The facility will focus on manufacturing JCB telehandlers and mobile elevating work platforms, two of the company's most in-demand product lines in the U.S. market. The decision to come to San Antonio is 100 percent the right decision. People here are ready to work."

The new San Antonio plant will be the company's largest manufacturing site globally. Located on the southside of San Antonio, it will span a total of 1 million square feet, following a recent expansion from the initially announced 720,000 square feet. Formerly a private ranch, the land was selected for its expansive footprint and its potential to be adapted for advanced manufacturing without displacing residential communities.

The facility's location aligns with broader economic development efforts in south Bexar County, supported by regional stakeholders aiming to bring industrial investment and high-quality jobs to the area. The site is adjacent to key infrastructure corridors, with new access roads under development as part of a public-private investment strategy. These improvements, facilitated through cooperation with Bexar County, will ensure the facility is seamlessly integrated into the city's logistics network and accessible for future workforce expansion.

"It's a million-sf facility and growing because we're looking at building some additional facilities for manufacturing needed for additional sales growth volume," Carver adds. "This plant is about moving product

that's required in the American system. The first product made here will be the telehandler, and we will start production in October. Additional product lines will be access-equipment such as scissor lifts and boom lifts. Building in America, closer to our American customers, shortens delivery time considerably."

The new JCB plant could possibly produce 60 percent of the telehandlers and access equipment currently produced in the UK. If so, this could potentially lay the groundwork for this plant to produce everything JCB manufactures here in the US, cutting down the lead time for JCB's American customers.

JCB is working with the community, schools, colleges, and universities setting up programs designed to lead our youth into sustainable jobs such as welding, engineering, programming, logistic programming, all the key courses needed to maintain the production of the new San Antonio plant and manufacturing in general. They have even set up a classroom in a Harlandale ISD Recreation Center where students can interact with computers, work benches for children to learn how to use tools, electrical connection stations to teach children the right order of sequence to get light to light up, and assembly stations – everything to pique the interest of the children and get them excited about manufacturing.

Ten percent of JCB's workforce is comprised of veterans. They have programs designed to help them find their way as they transition from military life to civilian life. With San Antonio's vast military population, bringing veterans and focusing on how to apply the skills they got from whatever branch of service they were in to applying them to be successful in a long-term career. -cwr



Mary C. Haskin
PHOTOGRAPHY

Specializing in catering to your individual needs!

- Commercial
- Aerial | Job site
- Convention
- Environmental
- Headshots
- Group & Team shots
- Golf Tournaments | Mixers
- Clay shoots
- Photo Booth | Luma Booth
- Green Screen
- Printing On Site
- Family | Senior
- Portrait
- Boudoir
- Engagements | Bridals
- Weddings
- Newborn | Maternity

OSHA - 10 Certified
Professional Photography Services
Maryhaskin3256@gmail.com
MaryCHaskinPhotography
(210) 410-2184
711 Solo Street, San Antonio, TX, 78260

Serving South Central Texas since 1980 as a Major Source for Commercial Building Materials & Supplies

DOWNTOWN
Off IH-10 @ Colorado Street
1146 W. LAUREL

LYNWOOD
BUILDING MATERIALS, INC.

210-477-3000
Fax 477-3090

Toll Free 1-800-580-9052 www.lynwoodsa.com



READ THE NEWEST ISSUE ONLINE!
www.constructionnews.net

 **CONSTRUCTION NEWS**
 San Antonio • Austin The Industry's Newspaper

Reinforcing local relationships



Christopher Moore and Charlie Medellin began their careers in the steel reinforcing industry. They spent 25 years helping companies thrive. After becoming successful entities, the companies were sold, and Moore and Medellin found themselves starting over.

In November of 2025, Moore and Medellin decided to take their knowledge, experience, and a leap of faith to secure their futures and started their own company, **River City Reinforcing, LLC (RCR)** with a desire to take care of our employees and service our customers.

Of course, starting a new business takes more than just knowledge and experience. Fortunately, through their many years in the industry, they established relationships with the right people who had seen their progress and knew their history to assist them.

Moore and Medellin began River City Reinforcing with a focus, 100 percent, on rebar and rebar accessories with a future storefront downtown where their clients won't have to make that extra trip to the local DIY center. "They can come to RCR to get rebar and at the same time, pick up tools, accessories and other materials that can go with concrete related work," says Moore.

Based on engineers' specs and where the building is built, River City has the right tools for the job.

Upon being awarded a job, RCR takes engineered plans and designs shop drawings for the field so they can install per engineer's specs. We'll redraw the plans and calculate the quantity and lengths. The shop drawing will be the instruction manual for the field guys, and we will fabricate the

material based off those drawings."

While River City Reinforcing would like to go anywhere in Texas, they concentrate on their customers based in San Antonio and its surrounding counties. We are concentrating on customers in San Antonio and the surrounding areas, but we will deliver anywhere they go," continues Moore.

The knowledge and experience of the River City team is what Moore and Medellin believe set them apart from their competitors. "Everyone in our company that we have, and we only have eleven people, we all have 20-plus years in the industry. We all wear different hats so call anyone of us, and we can help you. We have long relationships here in town. Call us directly and you will get one person, and you will get the answer you are looking for.

While they have been in business for such a short amount of time, River City Reinforcing has already experienced substantial growth. They have grown from a team of five to a team of eleven.

"We are a locally owned company. We plan to stay locally owned and stick around for the long run. We love the opportunity to service anyone with their concrete reinforcing needs."

River City Reinforcing, LLC is actively involved in all the local trade associations – ABC, AGC, and ASA, and look forward to building new relationships and maintain current ones through their networking events.

Moore closes with, "We are a local company that wants to take care of our people and build long term partnerships" -cwr

15 to 770 Ton Capacities Available for your Toughest Projects

From the smallest job to the largest, we have the equipment, manpower and expertise to handle them all.



Taking down bridge beams and setting a drilling rig at Lady Bird Lake in Austin.

It's not always better to be the biggest, but it is always better to be the best.
Serving Texas since 1979

www.alamocrane.com



San Antonio (210) 344-7370
Austin (512) 282-6866
State Wide (800) 880-0134

Austin CONSTRUCTION NEWS

Publisher..... Haley Mathews
 Editor Andi Mathews
 Production Kayla Johnson
 Staff Writer Carol Wiatrek Rothman
 Advertising..... Haley Mathews

Managing Editor:
 Andi@ConstructionNews.net

Austin Area Counties
 Travis, Hays, Bastrop, Burnet, Blanco, Caldwell and Williamson counties

Construction News Home Office
 P.O. Box 310207 • New Braunfels, TX 78131
 830-500-0071
www.ConstructionNews.net

Visit our Website to sign up for a **free monthly Digital Subscription**
www.ConstructionNews.net

The *Austin Construction News* is published monthly by Construction News and distributed by mail to construction-related companies of record in Austin and surrounding counties.

All submissions should be emailed to our editorial offices. We reserve the right to edit any materials submitted. No fees for materials, copy or photographs submitted will be due unless agreed upon in advance in writing. Submissions will be published at our discretion on a space available basis.

Construction News will not be liable for errors in copy or in advertisements beyond the actual cost of space occupied by the error. Publisher reserves the right to reject any advertisement at any time.

©2023 Construction News, Ltd.

SIGN UP FOR OUR FREE DIGITAL SUBSCRIPTIONS
GO TO www.ConstructionNews.net Select "Digital Subscription".

Skilled Labor Shortages Impacting Central Texas Construction

Workforce Challenges Continue Reshaping the Austin–San Antonio Construction Market

Central Texas contractors are facing one of the most severe skilled labor shortages in decades as explosive growth in AI infrastructure, semiconductor manufacturing, utility expansion and industrial construction continues outpacing the available workforce.

The shortage is becoming especially pronounced throughout the Austin–San Antonio corridor, where competition for electricians, heavy equipment operators, HVAC technicians, welders and utility crews has intensified dramatically over the last two years.

Electrical labor shortages are becoming one of the most critical challenges in the region. Large-scale data center campuses, semiconductor facilities and utility infrastructure projects are aggressively competing for electrical labor, often pulling workers away from residential and traditional commercial construction.

Contractors across the region report rising wage pressure, longer hiring timelines, increased overtime costs, delayed project schedules and greater dependence on traveling labor crews.

Mission-critical facilities tied to AI infrastructure require highly specialized electrical systems, backup power integration and complex controls work, increasing demand for



experienced journeymen and foremen. The continued expansion of semiconductor manufacturing east of Austin and growing AI-related data center development throughout Central Texas are creating unprecedented workforce competition.

Projects associated with data centers, utility infrastructure, substations, semiconductor suppliers, industrial manufacturing and power generation are frequently offering premium wages and incentive packages to secure labor.

Smaller contractors and residential builders are increasingly struggling to compete with large industrial projects backed by institutional capital and long-term contracts.

Heavy civil and utility contractors are also facing labor constraints as cities and

counties accelerate infrastructure expansion projects throughout the region.

High-demand positions currently include:

- Electricians
- HVAC technicians
- Welders
- Crane operators
- Equipment operators
- Pipe layers
- Utility foremen
- Concrete crews
- Industrial mechanics
- Controls technicians
- CDL drivers

Construction leaders throughout Texas continue warning about an aging workforce and a shrinking pipeline of younger workers entering skilled trades. Many experienced field supervisors, equipment operators and master

tradesmen are nearing retirement age, creating additional concerns involving leadership shortages and long-term workforce sustainability.

To address shortages, many contractors are expanding apprenticeship programs, trade school partnerships, in-house training programs and recruitment efforts outside Texas.

Several companies are also working more closely with community colleges and workforce development organizations to accelerate training pipelines for electricians, welders and industrial maintenance technicians.

Technology adoption is also increasing as firms attempt to offset labor shortages through prefabrication, modular construction, AI-assisted project management, drone surveying and automated equipment.

However, industry leaders say technology is unlikely to fully replace the need for skilled field labor anytime soon, particularly in heavy civil, electrical and utility construction sectors. Industry analysts expect skilled labor shortages to remain one of the defining challenges for Central Texas construction over the next several years as AI infrastructure, industrial development and population growth continue accelerating across the region.



Get on top of C&D requirements!

Austin requires Construction and Demolition Recycling

Plan ahead to set up your project for success:

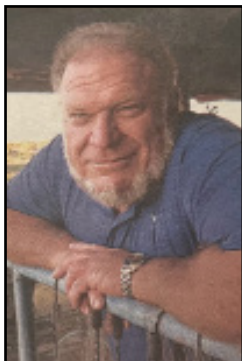
- Divert C&D debris away from landfills
- Track waste to stay on top of City requirements
- Submit construction recycling report online



Go to [AustinTexas.gov/CD](https://austintexas.gov/CD) for requirements and waste management planning resources.



The Great Outdoors



Ken Milam

Ken Milam's Fishing Line

Since 1981, Ken Milam has been guiding fishing trips for striped bass on Lake Buchanan in the Texas Hill Country.



June on Lake Buchanan

June on Lake Buchanan is the peak of the summer bite — the short, high-output window when crews can stack fillets fast and head home with a cooler that barely shuts. If your goal is to fill the freezer, this is the month you don't hesitate on.

Warm, stable water pushes stripers, hybrids, and white bass into aggressive summer feeding patterns. They school hard, chase bait, and create steady action from first light through midmorning. For construction teams used to long days and tight schedules, June offers something rare: easy success with high return.

A half-day trip this time of year can produce enough fillets to feed families, coworkers, and weekend gatherings — all without burning a full day off the job. It's a morale booster, a team builder, and a freezerfiller rolled into one.

Seasoned crews know the rule:

If you want a meat haul, June is your time.

Once late July heat sets in, the easy action fades and the window closes.

- Peak summer bite — predictable, high-volume action

- Crew-friendly conditions — simple, steady, no experience needed

- Freezerfilling results — fast limits, fast fillets
- Perfect for team outings — morale, camaraderie, and a haul to take home

Don't forget, school is out for summer vacation now! This is the time to get the kids in on a fishing trip. Early summer trips can be a little cooler and the kids are already used to waking up early for school. You have several weeks to get them on the water, but don't wait until the last minute when everybody else will be trying to get it in before school starts! Give them a good answer for the "what did you do this summer?" question on the first day of school!

You can also celebrate your graduate with a fishing trip to share with friends, and since June is a popular wedding month, a fishing trip can make a great Bachelor party! What else happens in June? Father's Day! Bring your Dad or bring the kids so they learn how to spoil you on Father's Day in the future!

Whether you are entertaining or just want to watch the sun go down over bent rods and the cry of, "Fish On!," we can make it happen!

If your crew wants to load up, laugh hard, and leave with a pile of fillets, June on Lake Buchanan is the month to make it happen.



Eric White (center) *Freedom Painters*, Owner and friends had a great day on the water in Corpus.



Quality Fence had awesome time supporting the *Joeris General Contractors* Charity Golf Tournament! The Quality Fence & Welding team wrapped up the day in 18th place.

Funds raised from the event directly support the generous charitable foundations initiative such as community development projects, education programs, and healthcare initiatives

Quality Fence is proud to support a great general contractor and an even better cause right here in San Antonio. Back to work!



Tanner Mathews, *KCS*, Owner, taking a rare day off from laying artificial turf to catch a nice redfish on the coast.



Email
Andi@constructionnews.net
for bragging rights!



The Great Outdoors

Memorial Day Weekend Delivers Big Action on Calaveras and Medina Lakes

For South Texas anglers, Memorial Day weekend offered more than just time off — it delivered nonstop action on the water, unforgettable memories, and some of the hottest catfishing action Calaveras Lake has seen in quite some time.

Guide trips with C&C Guide Service stayed busy from daylight to dark as anglers bounced between Calaveras Lake and Medina Lake chasing everything from hard-fighting redfish and hybrid stripers to bass and giant catfish. Add in a little lightning, some rain showers, plenty of laughs, and a boatload of fish, and it became the kind of holiday weekend fishermen talk about long after summer ends. “This was one of those weekends you don’t forget,” said guide operator Clendon Taylor of C&C Guide Service. “Most of the trips were catch-and-release, but the amount of fish we caught was incredible. The catfish bite especially was absolutely on fire.”

While Calaveras has long been known for quality redfish and hybrid striper action, recent weeks have seen the catfish bite explode. According to Taylor, a new experimental punch bait recipe developed alongside Scott Birnel turned into one of the biggest stories of the weekend. “We’ve been working on a new bait recipe and it flat out knocked their socks off,” Taylor joked. “We may have to call it ‘Unicorn Crack’ because it was getting bit almost instantly.”

Live social media videos posted during the weekend showed rods bending repeatedly as anglers hauled in hefty blue catfish and channel cats throughout the day. As water temperatures continue climbing heading into summer, guides expect the Calaveras catfish bite to only improve. “The catfish action is just getting started,” Taylor said. “This summer could be one of the best we’ve seen in years.”

Along with the catfish bite, anglers also connected

on aggressive redfish, fat hybrid stripers, and quality largemouth bass as changing weather conditions kept fish active across multiple lakes.

Calaveras Lake continues to remain one of South Texas’ most reliable multi-species fisheries, particularly during late spring and early summer when warming water temperatures push feeding activity into overdrive.

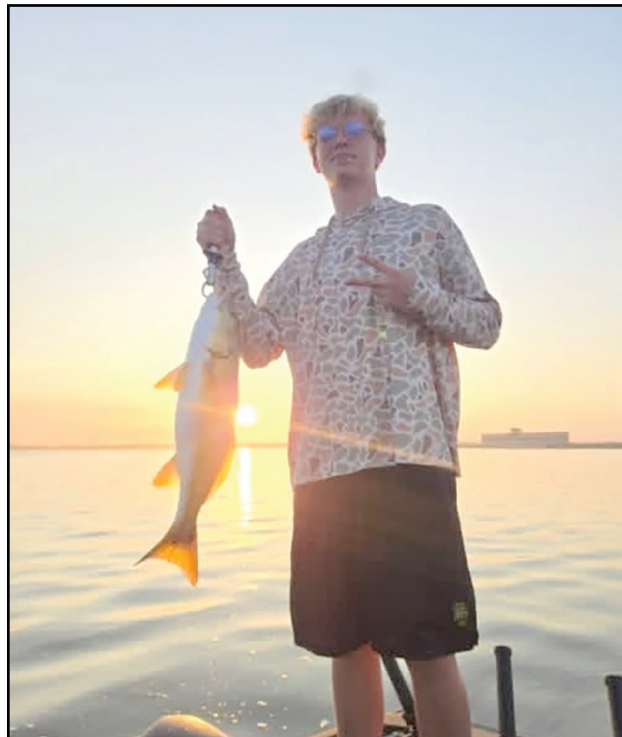


Captain Clendon Taylor
C & C Guide Service
210-831-4679

or find me on my social platforms
 C&C Guide Service
 castingandcatchingguideservice



Sponsored by:
 Mercury Marine | BAJÍO Sunglasses
 Power-Pole Total Boat Control
 Fish Tackle & Marine
 Livingston Lures | ATX Lure Company



South Padre Island Tarpon Fishing Heats Up for Summer

Summer along the lower Texas coast means one thing for many offshore anglers — tarpon season has arrived around South Padre Island. As Gulf water temperatures continue warming into the upper 70s and 80s, migrating schools of tarpon are beginning to push along the beachfront, jetties and nearshore waters surrounding South Padre. June through August traditionally marks the peak of the silver king action in the region.

Local guides say the summer pattern often revolves around bait movement. Large schools of menhaden, mullet and other forage species stack along the beachfront this time of year, and tarpon follow closely behind. Anglers commonly target rolling fish within a mile or two of the beach during calm morning conditions.

Early mornings are typically the prime window before the wind builds. Many experienced tarpon fishermen begin scanning the beachfront at sunrise looking for rolling fish, nervous bait schools or birds working over feeding activity. Clean green water close to the beach often creates ideal conditions for sight-casting opportunities.

Live bait remains one of the most productive summer tactics for South Padre tarpon. Free-lined mullet, pinfish and large threadfin or menhaden are commonly drifted through active schools. Many anglers also suspend live baits under floats near passes and current lines where tarpon stage during tidal movement.

Artificial lures are also producing explosive strikes during the summer migration. Large swimbaits, soft plastic jerkbaits and topwater plugs can be highly effective when fish are actively feeding near the surface. Fly anglers continue targeting tarpon with large streamer-style flies during calm weather and clear-water conditions.

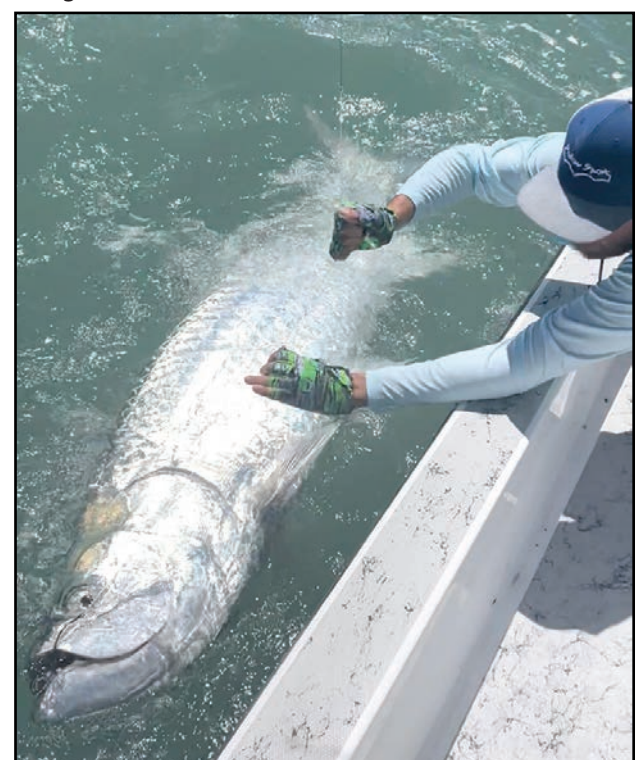
The Brazos Santiago Pass near the jetties remains one of the more consistent summer tarpon areas due to heavy tidal movement and concentrated bait activity. Incoming tides often bring cleaner Gulf water into the pass, which can trigger feeding activity around current seams and deeper structure.

Weather patterns play a major role in summer success. Calm seas and lighter winds allow anglers to run the beachfront safely while also making it easier to locate rolling fish. Heavy southeast winds common during summer afternoons can quickly muddy nearshore waters and push anglers closer to protected areas around the jetties and passes.

South Padre’s unique location near the Lower Laguna Madre also gives anglers opportunities to combine tarpon trips with trout, snook and redfish fishing when conditions offshore become less favorable. One of the biggest keys for summer tarpon anglers is patience. Fish may roll only briefly before disappearing, requiring boaters to stay mobile and constantly search for bait and surface activity.

When anglers do connect, the result is often one of the most violent fights in Gulf Coast fishing, with massive aerial jumps and blistering runs becoming the norm.

With bait concentrations increasing and water temperatures continuing to rise, South Padre Island appears set up for another strong summer tarpon season along the Texas coast.



Leadership is revealed in moments of discomfort, and a shared resolve

LaForce, Electronic Security Systems, was proud to support **Kayla Watkins** and her participation in the Construction Veterans Reducing Suicide (CVRS) program through Associated General Contractors (AGC) Austin, an experience that pushed her well beyond her comfort zone while building deep bonds with fellow veterans. Through the CVRS SAFE program and the demanding climb of Guadalupe Peak, the highest point in Texas at 8,751 feet, Kayla and her team tackled more than

3,400 feet of elevation over four challenging miles, navigating physical exhaustion, mental barriers, and real adversity together. CVRS operates at the critical intersection of veterans and the construction industry, providing tools, resources, and hope where it is needed most. LaForce is proud to support Kayla and the veteran community, and to stand behind leaders who bring compassion, resilience, and a commitment to others back to our teams and jobsites.



Way to go Kayla!

WELCOME TO NAWIC




DANIELLE ROGERS
BUSINESS DEVELOPMENT

Danielle Rogers is in business development at JC Davis Power, where she supports construction projects with temporary power, climate control, and lighting solutions. She is passionate about building industry relationships and helping keep projects moving.

Outside of work, Danielle enjoys spending time with her kids, attending live music events, and renovating her home for her family. She is proud to be part of NAWIC Austin Chapter No. 7.

NAWIC AUSTIN CHAPTER NO. 7

WELCOME TO NAWIC



ALEX FOLDEN
OFFICE MANAGER

Alex Folden is the Office Manager at BryComm, where she supports daily operations, employee engagement, recruiting, marketing, and office culture. She is passionate about creating strong teams and meaningful workplace experiences.

Outside of work, Alex enjoys traveling, Pilates, live music and festivals, trying new restaurants, and spending time with her dog and loved ones. Originally from Northern California, she has lived in Austin for the past 11 years.

NAWIC AUSTIN CHAPTER NO. 7

Tanner Mathews
713-829-8894
tanner@kennyscs.com




Premier Landscape Renovation

ARTIFICIAL TURF | DECORATIVE STONE
FLAT WORK | FENCES & GATES

Aprio

Build Smarter with Aprio

Aprio provides industry-leading tax, financial, and advisory solutions to help you strengthen margins, reduce risk, and keep projects moving.

Visit Aprio.com/construction



Inaugural clay shoot

When **Mark Baubit's, Marksmen General Contractors** CEO and founder, father was diagnosed with non-Hodgkin's lymphoma he began a journey dedicated to raising funds for blood cancer research and finding a cure.

Since his journey began, Baubit has been engaged with **Blood Cancer United**, formerly known as the **Leukemia & Lymphoma Society**, educating himself, actively raising funding and bringing awareness of blood cancer. Through his efforts, Baubit has been nominated for Blood Cancer United Visionary of the Year.

On May 6, Marksmen General Contractors hosted its first inaugural clay shoot benefiting Blood Cancer United in partnership with **Noble General Contractors**. All proceeds from the event were donated to Blood Cancer United.

Over 250 people, including the 230 participating shooters, came together in support of this worthwhile campaign. A special THANK YOU to **MAREK**, Marksmen's Top Gun sponsor, **T & D Moravits** Marksmen's High Brass sponsor and all of Marksmen General Contractor's Inaugural Clay Shoot sponsors. *Photos courtesy of Mary C. Haskin Photography-cwr*



1st Place Team – Red Course



1st Place Team – Yellow Course



Ladies 1st Place – Yellow Course



Ladies' 1st Place – Red Course



Men's 1st Place – Red Course



Men's 1st Place – Yellow Course



Ladies' 2nd Place – Yellow Course



2nd Place Ladies' – Red Course



2nd Place Men's – Red Course



2nd Place Team – Red Course



2nd Place Team – Yellow Course



3rd Place Ladies' – Red Course



3rd Place Ladies' – Yellow Course



3rd Place Men's – Red Course



3rd Place Team – Red Course

Red Course Individual Winners:

- Ladies' 1st Place:** Michelle Seward, Team Davis – 79
- Ladies' 2nd Place:** Taylor Germain, ATKG – 78
- Ladies' 3rd Place:** Tess Shelton, Team Davis – 72
- Men's 1st Place:** Rudy Baza, Sciens Building Solutions – 98
- Men's 2nd Place:** Wesley Johnson, Southland 1 – 98
- Men's 3rd Place:** Zac Patrick, Sciens Building Solutions - 97

Red Course Team Winners:

- 1st Place:** Sciens Building Solutions – 389
- Zac Patrick
- Rudy Bazan
- Sean Moran
- Jeffrey Williams
- 2nd Place:** Acrisure – 371
- Drew Addison
- Bruce Culver
- Clyde Culver
- Tom Quintero
- 3rd Place:** Travelers – 357
- Robert Carmichael
- Rudy Ramos
- Waylan Brannan
- Mick Jacobson

Yellow Course Individual Winners:

- Ladies' 1st Place:** Ryley Zaehring, Big State Electric – 75
- Ladies' 2nd Place:** Amber Cagle, Mission Restaurant Supply - 62
- Ladies' 3rd Place:** Taylor Frost, RSM - 54
- Men's 1st Place:** Layne Lemoine, Villarreal Civil - 98
- Men's 2nd Place:** Steve Kopp, Kocurek Land Improvement - 96
- Men's 3rd Place:** Justin Triesch, Noble General Contractors – 96

Yellow Course Team Winners:

- 1st Place:** Kocurek Land Improvements – 362
- Tommy Johnson
- Steven Kocurek
- Steve Kopp
- Steven Johnson
- 2nd Place:** Clearfield Construction – 339
- Bobby Pena
- Christian Trevino
- Fernando Keller
- Jason Pauling
- 3rd Place:** Bartlett Cocke – 327
- Marshall Laine
- Aaron Clark
- Frank Benes
- Austin Davis



Associations & Education ★ General Contractors ★ Subcontractors ★ Service Providers ★ Subcontractors ★ Supplies ★ Truck & Equip Dealers

Service Providers

Subcontractors

Suppliers



Alamo Crane Service
Serving Texas Since 1979
San Antonio (210) 344-7370
Austin (512) 282-6866
State Wide (800) 880-0134
www.alamocrane.com



R. Carson Fisk
Shareholder
Andrew Myers • Attorneys at Law
919 Congress Ave, Ste 11050 • Austin, TX 78701
T 512.900.3012 D 512.900.3032
cfisk@andrewmyers.com • andrewmyers.com
Board Certified | Construction Law
Texas Board of Legal Specialization



1340 Airport Commerce Dr, Ste 415
Austin, Tx 78741
(512)836-3950
www.GoAlterman.com
Texas Electrical Contractor's License
No. 17043
Texas Security Contractor's License
No. B12899



1146 W. Laurel
(Downtown Off IH-10 @ Colorado Street.)
San Antonio, TX
Local Direct (210) 477-3000
USA Toll Free (800) 580- 9052
www.LynwoodSA.com

For Information on Resource Guide Ads, contact Haley Mathews, 830-500-0071 or email at haley@ConstructionNews.net

Austin Area Data Center Boom Reshaping Central Texas Construction Market

Central Texas is rapidly emerging as one of the nation's hottest data center construction corridors as artificial intelligence growth, cloud computing demand and power infrastructure investment fuel billions of dollars in planned development stretching from Austin to San Antonio.

Industry analysts say the Austin-San Antonio corridor has become one of the fastest-growing hyperscale markets in the United States, with projects now spreading into Hutto, Taylor, Caldwell County, Temple and surrounding rural areas where land and power availability remain attractive to developers. The surge is creating major opportunities for contractors involved in electrical work, utility infrastructure, HVAC systems, concrete, steel erection, heavy civil construction, crane services and backup power generation.

Recent project announcements include a proposed 500-acre technology park in Caldwell County south of Austin being pursued by PowerHouse Data Centers. The development would add another large-scale AI and cloud computing campus to the region's growing pipeline of hyperscale projects. Meanwhile, additional large-scale projects continue moving forward east of Austin near Taylor, where a 360-megawatt data center campus recently received approval adjacent to the massive Samsung semiconductor development. Construction on the project is expected to span several years as developers race to meet rising AI infrastructure demand.

Developers are increasingly targeting Central Texas



because of its combination of available land, strong fiber connectivity, expanding utility infrastructure and proximity to major technology operations already established in Austin.

Market observers report that more than 600 megawatts of data center capacity is currently under construction across the Austin-San Antonio corridor, with thousands of additional megawatts in various planning stages. The rapid growth is also reshaping the regional construction labor market. Contractors across Texas report rising competition for electricians and skilled mission-critical construction trades as hyperscale projects absorb workforce capacity at unprecedented levels.

At the same time, power generation and utility infrastructure have become central issues tied to future growth. Developers are increasingly exploring behind-the-meter generation, natural gas-fired power systems, battery storage and dedicated substations as they seek faster project timelines amid grid interconnection delays.

Industry experts say AI computing requirements are fundamentally changing how large-scale projects are designed and built, with some campuses demanding power loads comparable to small cities.

The boom is creating ripple effects throughout Central Texas construction markets, particularly along the SH 130 corridor and communities surrounding Austin, where industrial development, warehousing and utility upgrades continue accelerating alongside data center expansion.

Construction suppliers across the region are also seeing increased demand for generators, cooling systems, switchgear, concrete materials and steel fabrication tied to mission-critical infrastructure projects.

However, the explosive growth has also triggered debate surrounding water consumption, power demand and long-term grid impacts. Texas lawmakers and local officials have recently begun discussing potential restrictions and additional oversight as large-scale AI campuses continue expanding statewide. Even with those concerns, developers continue aggressively pursuing sites throughout Central Texas as the region solidifies its position as a major national hub for AI and hyperscale infrastructure construction.

Industry observers say the Austin area's data center momentum shows little sign of slowing as technology companies continue searching for power-ready sites capable of supporting the next generation of artificial intelligence infrastructure.



Texas Disposal Systems and Zero Waste Strategies teams pose for a photo in front of the TDS Materials Recovery Facility in Creedmore



Bobcat of Austin knows better than anyone, safe digging isn't optional, it's part of doing the job right. Call 811 before you dig.

 VISIT US ONLINE

 **CUSHMAN**

CUSHMAN HANDLES ALL THE DEMANDING WORK



SALES, RENTAL AND LEASING

 **MISSION GOLF CARS** EST. 1963

AUSTIN (512) 312-4115 | SA (210) 545-7868 | MARBLE FALLS (830) 201-0344
MISSIONGOLFCARS.COM /MISSIONGOLFCARSWACOTX



**YOUR AD
HERE**

Advertise with
Construction News!
Call Haley today
at 830-500-0071

RVK Architecture announces promotion of Heath J. Wenrich to President



Heath Wenrich & Judy Zimmerman

RVK Architecture, a full-service design firm recognized for its commitment to client service and community-focused design, has announced the promotion of **Heath J. Wenrich** to President.

In the role of President, Heath will oversee firm operations and continue driving excellence in project delivery, team development, and client experience. Known for his collaborative leadership style and commitment to mentorship, Heath has helped strengthen the firm's multi-disciplinary approach and culture of professional growth.

Wenrich said, "At my first yearly review, our founder Ken Rehler asked, 'what was good about RVK?' and I said, 'the people,' 27 years later, it's still the people."

As Chief Executive Officer, **Judy Zimmerman** leads the firm's vision and strategic direction, focusing on organizational growth, industry leadership, and strengthening the firm's culture of collaboration and integrity. Since joining the firm in 1986, she has played a key role in advancing client relationships, expanding market presence, and guiding complex projects and teams.

"Our success has always come from our 'incredible staff.' Our culture did not happen overnight. We've continued to build on it and improve it," said Zimmerman.

The leadership transition reflects the firm's continued involvement in long-term relationships, professional excellence, and strategic growth across its practice areas and markets.

Iron in the Air

A **Iamo Crane Service** assists a great customer hang iron in Bastrop, TX. Using one of their LTM 1095-5.1, 120-ton Liebherr crane, lifts and sets a 6,000-lb beam at 127 feet while the customer secures the beam in place.



Insurance Agency
1 (800) 258-8302
www.TheNitscheGroup.com
Follow Us Online   



SOME THINGS ARE JUST
BUILT TO LAST

The Nitsche Group Has Proudly Insured Texans Since 1949.



BUSINESS • BENEFITS • BONDS • UMBRELLA
WORKERS' COMP • EQUIPMENT • BUILDERS RISK • & MORE



See what our team of experts can do for you. Call Today.

1(800) 258-8302



www.pipelineintelligence.com

Two publications that have an up-to-the-minute quick reference listing of your upcoming pipeline and renewable projects around the US & Canada

Ashley Mohn
Vice President
281-499-3131

www.windsolarintelligence.com



LEGAL



Public-Private Infrastructure Agreements Becoming More Complex Across Central Texas. Legal and Construction Trends Impacting Austin, San Marcos and New Braunfels

Kurt Alford
Chief Legal Officer
Arnold Ribman, PC
San Antonio, TX

One of the most significant legal and financial trends emerging in Central Texas construction is the growing complexity of public-private infrastructure agreements tied to rapid population growth and large-scale industrial development.

Cities and counties throughout the Austin-San Antonio corridor are increasingly requiring developers to participate directly in funding and delivering critical infrastructure improvements needed to support new growth. As a result, infrastructure negotiations are becoming longer, more detailed and more heavily scrutinized by municipalities, utility providers, lenders and legal teams.

Developers are now routinely being asked to contribute toward road expansions, water transmission lines, wastewater treatment capacity, drainage systems, electrical infrastructure upgrades, traffic signalization and off-site utility extensions.

Fast-growing suburban markets including Austin, San Marcos, New Braunfels, Georgetown, Kyle, Liberty Hill and Bastrop are seeing particularly aggressive negotiations as local governments attempt to keep pace with explosive residential, industrial and data center growth.

Construction attorneys and developers say one of the largest shifts involves municipalities pushing more upfront infrastructure costs onto private development groups rather than relying solely on long-term public funding mechanisms. This is especially true in areas experiencing pressure on water systems, wastewater plants and roadway capacity.

The legal negotiations surrounding these projects often involve development agreements, Municipal Utility Districts (MUDs), Public Improvement Districts (PIDs), Chapter 380 economic incentive agreements, reimbursement agreements, utility cost-sharing agreements and impact fee negotiations.

In many cases, developers are being required to oversize infrastructure systems to accommodate future regional growth, creating additional disputes over

reimbursement timing and long-term ownership responsibilities.

Data center and industrial developments are adding another layer of complexity because of their extraordinary demands on electrical infrastructure, substations, backup generation capacity and water systems. Utility coordination has become a major legal issue, particularly when multiple large projects are competing simultaneously for transmission access and utility capacity.

Attorneys involved in Central Texas development say negotiations are increasingly centered around questions involving reimbursement structures, maintenance obligations, utility delivery timelines, escalation risk and drainage responsibilities.

Another growing trend is the increasing use of phased infrastructure agreements tied to multi-year master-planned developments. Municipalities are demanding stricter performance benchmarks and construction timelines before authorizing additional development phases.

Water availability is also becoming one of the most sensitive issues in Central Texas negotiations. Several municipalities are imposing stricter requirements related to groundwater access, wastewater treatment expansion and long-term conservation planning before approving large-scale projects.

For contractors, the trend is creating larger opportunities in heavy civil construction, utility installation, roadway construction, drainage systems and substation development. However, it is also increasing contractual complexity and project risk as projects become more dependent on public agency coordination and long-term infrastructure financing.

Industry observers say infrastructure negotiations are likely to become even more complicated over the next several years as AI-driven data center growth, continued migration into Central Texas and rising utility demand place additional strain on public systems throughout the region.

INSURANCE



How Wellness Programs Can Drive Business Success

Nathalie Arldt, RHU, REBC, CISR, CAM
Employee Benefits Director
The Nitsche Group Insurance
Austin, TX

June is Employee Wellness Month

Employee Wellness Month offers a clear opportunity for businesses to evaluate and enhance their wellness initiatives. Employee wellness is more than a perk, it is a sympathetic and smart business strategy with real potential to reduce commercial insurance costs, boost morale, and impact the overall success of a company.

In a tight labor market, your competitive edge may very well come from having healthy and happy employees who are actively engaged in a wellness program offered by your business. Companies that prioritize and invest in employee wellness are also investing in their future. Healthy employees are the foundation of a thriving business and companies that recognize this have positioned themselves for long-term success.

Additionally, in the current business climate, companies are navigating rising healthcare costs, talent shortages, and evolving workforce expectations. Specifically with rising healthcare costs, wellness programs have emerged as a powerful tool to help enhance productivity, reduce costs, lead to more favorable insurance terms, and foster a resilient organizational culture.

The Financial Case for Wellness

The potential return on investment or employee wellness programs is compelling.

A recent study published by the Harvard Business Review indicates that on average, businesses experience a \$3.00 reduction in overall medical costs for each \$1.00 spent on employee wellness initiatives. Furthermore, companies with active employee wellness programs reported 25 percent reduction in absenteeism resulting in lower labor costs of nearly \$2.00 per \$1.00 spent on employee wellness programs and a 30 percent reduction in workers' compensation and disability management costs.

These savings are not limited to large corporations. Small and mid-sized businesses also benefit significantly. A recent study found that employee wellness programs can lower the average healthcare costs for businesses by nearly \$30 per month, per employee. Even small and mid-sized businesses could see significant long-term cost savings.

While the exact savings from an employee wellness program will vary, a company will see a consistent and substantial positive effect on the organization, though the specific details of that effect vary depending on the program's design and the specifics of the insurance plan. Regardless of the variables, successfully implemented employee wellness programs lead to noticeable improvements in employee health, productivity, and overall cost efficiency.

Beyond Cost Savings: Productivity and Retention

Employee wellness programs offer more than just cost savings. They can also foster a more engaged, motivated, and productive workforce.

Employees participating in a wellness program showed a 5 percent increase in productivity and 70 percent of participants reported higher job satisfaction than non-participants.

Employee wellness programs have also proved to be an important factor in improving employee retention. Companies that implement these programs tend to experience lower turnover rates, averaging around 9 percent compared to 15 percent in organizations without them. The reduction in turnover naturally lowers recruitment and training costs while creating a more stable and experienced workforce and sustained business success.

The Bottom Line

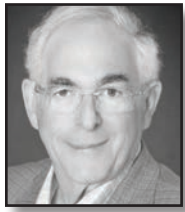
Prioritizing and investing in an employee health and wellness program is a smart business strategy that can deliver significant benefits to both employees and employers.

The benefits are clear:

- 1) Reduced healthcare costs,
- 2) Reduced absenteeism,
- 3) Enhanced productivity,
- 4) Increased employee retention,
- and
- 5) Happier, healthier employees.

Employee wellness programs have proven to be a savvy business strategy. If you are considering creating a wellness program or improving the one you already have, working with an experienced insurance benefits team can make a big difference. At The Nitsche Group, we are here to help companies select a wellness strategy that works for their business and their people.

ACCOUNTING



Secret Texas Wealth Tax Traps

Steven Bankler, CPA, PFS, Cr.FA, CFF, CGMA
Senior Partner
Bankler Partners, LC
San Antonio, TX

Texas doesn't have a formal "wealth tax," but it absolutely taxes wealth as you earn it, spend it, and pass it on. Poor planning can turn Texas's tax-friendly reputation into a very expensive surprise.

In 2023, Texas voters approved a constitutional amendment that bans a state "wealth tax," defined as a tax based on the wealth or net worth of an individual or family. Texas also constitutionally forbids a personal income tax, which is a major reason many high earners move here. But the money to run the state still has to come from somewhere. To that end, Texas leans heavily on property taxes and sales and use taxes rather than income-based taxes. For entrepreneurs, executives, and investors, poor planning can sabotage earnings. Federal taxes don't help.

If you're a Texas business owner, keep an eye on the following tax traps as your wealth increases.

Trap 1: Property Taxes on Growing Assets

While Texas has no state-level tax on your net worth, it has some of the highest effective property tax burdens in the country. As your home, rental properties, or business real estate appreciate, your annual property tax bill can climb far faster than your income from those assets.

Common issues include rapidly rising appraisals, underutilized exemptions (including for homestead and business personal property), and owning valuable land that generates little cash flow. Without proactive asset management—such as evaluating entity structures, appeal strategies, and exemption planning—property taxes can force sales or limit your ability to reinvest.

Trap 2: Federal Income Tax

Living in Texas means no state or local income tax—but you are still fully exposed to federal income tax, which can reach up to 37% on ordinary income, 20% on long-term capital gains and qualified dividends, plus a 3.8% net investment income tax for high earners (as of 2026).

If your compensation is heavily weighted toward bonuses, equity, or business profits, poor timing can push you into the highest brackets and trigger additional surtaxes. That's why many Texas business owners have learned to spread income, manage capital gains and losses, use tax-advantaged accounts, and align investment strategy with their tax profiles—which can meaningfully reduce the drag of federal tax on growing wealth.

Trap 3: Poor Exit Planning for Business Owners

For owners of closely held businesses, the biggest tax bill often comes on the day you sell, not in the years you're building. A poorly structured sale of a Texas business can trigger substantial federal capital gains tax, depreciation recapture, and sometimes additional employment or self-employment taxes.

Effective exit planning may involve

entity choice (C-corp vs. S-corp vs. LLC, for instance), timing the sale across tax years, installment structures, earn-outs, and tools such as qualified small business stock (QSBS), where available. Coordination with your broader financial and estate plan—charitable strategies, family trusts, and gifting of interests before a liquidity event—can significantly reduce your ultimate tax cost while keeping control where you want it.

Trap 4: The Texas Margin Tax

Most businesses must contend with the Texas Franchise Tax (often called the Margin Tax). This tax can be a "covert" expense if your entity structure and deductions aren't optimized.

To manage this burden, business owners should maximize specific state-level allowances, including deducting compensation paid to employees and officers, structuring profits that are rightfully allocated as qualifying compensation, and correctly categorizing investments in heavy equipment and machinery as either depreciation deductions or equipment costs (depending on various factors). These steps can effectively lower your taxable margin up to certain amounts.

Trap 5: Shortsighted Estate Planning

With no Texas estate tax either, wealthy individuals can overlook the need for robust estate planning, assuming that "no state death tax" means "no estate problem." But that would be a, well, grave mistake.

Poor estate planning leaves wealth fully exposed to federal transfer rates. It can also leave opportunities on the table, including Texas community property laws in which most marital property can receive a full step-up in basis at the first spouse's death, significantly reducing future capital gains tax for the survivor. Without intentional estate planning—updated wills, thoughtful trust design, coordinated beneficiary designations, and lifetime gifting strategies—you can lose that basis step-up, concentrate assets in the wrong hands at the wrong time, or inadvertently trigger federal estate tax and family conflict.

Trap 6: Misreading "Low Tax" as "No Planning Needed"

Texas is often marketed as a "low tax" state, but its system is regressive: lower- and middle-income residents pay a higher share of their income in total state and local taxes than the top 1%. For high earners and growing families, this structure creates both opportunity and risk. With careful planning, you can enjoy the absence of a state income, estate, and wealth tax while managing property, sales, and federal taxes efficiently.

That planning typically includes coordinated asset management, early exit planning for business interests, and ongoing estate planning that is updated as your wealth grows and laws evolve. The earlier you start integrating tax strategy into your financial decisions, the more likely you are to keep what you earn and not fall victim to a covert wealth tax.



Gina Valorz, CPA, PFS, CGMA
Managing Partner
Bankler Partners, LC
San Antonio, TX

OSHA



Digging Deep Into Safety: Tools. Training. Resources

Michael Middleton
Compliance, Safety and Health Officer
OSHA
Harker Heights, TX

Trench collapses remain one of the construction industry's deadliest hazards, and far too many of these incidents are entirely preventable. In 2025, 21 workers lost their lives in trench collapses. The danger has continued into 2026, with three workers already killed in trench-related incidents during the first six months of the year alone.

These tragedies happen in seconds. A trench collapse can bury workers beneath thousands of pounds of soil, leaving little chance of escape. Rescue operations are extremely difficult and often require specially trained emergency responders. For families, coworkers, and communities, the consequences are devastating.

June is Trench Safety Month, an opportunity to raise awareness about these hazards and remind employers and workers that these incidents can be prevented when proper safety measures are in place.

One of the most common things safety professionals hear is: "I've been doing it this way for years and never had an incident. Why should I spend money on shoring?" Others say, "Of course I care about my employees' safety, but the bottom line has to work."

The reality is simple: safety and business success go hand in hand. Whether you are a small contractor, subcontractor, or a large company managing multiple projects, using the right protective systems for every trenching and excavation job protects both workers and businesses. Appropriate safety equipment is available for projects of every size, and experts consistently find that the long-term savings from proper safety practices far outweigh the costs of cutting corners.

A single preventable injury or fatality can lead to workers' compensation claims, OSHA penalties, project delays, legal costs, and the expense of hiring and retraining workers. More importantly, no job is worth risking a life.

The industry's well-known message — "Slope It, Shore It, Shield It" — continues to serve as a simple but effective reminder of the steps needed to keep workers safe during trenching and excavation operations.

Training and education are equally important. Employers and workers often ask where they can find reliable guidance and resources. Fortunately, several organizations provide free training and support.

OSHA and its partners, the North American Excavation Shoring Association (NAXSA) and the National Utility Contractors Association (NUCA) work together through the Partners for Safe Trenching and Excavation Operations Alliance to promote best practices and increase awareness across the industry. Their efforts include free onsite and online training, trench safety demonstrations, educational materials, and nationwide safety events.

Among these initiatives is the National Trench Safety Stand Down, taking place June 15–19, 2026, which encourages employers to pause work and talk directly with employees about trenching hazards and protective systems.

Trenching and excavation fatalities are preventable. The solution starts with three simple reminders: *Use the Tools. Use the Training. Use the Resources.* Taking these steps can help save lives and ensure every worker returns home safely at the end of the day.

HAPPY Birthday TO YOU

JUNE

- 5 — Darrell Hastings / Four Seasons Disposal
- 5 — Daniel Longoria / Core Electrical Group
- 6 — Matt Graham / Novus Technology Solutions
- 8 — Lori Dehoyos / Keller-Martin
- 15 — Yvette Robinson / Robinson General Contractors
- 15 — Melissa Galvan / C.G. Steel Solutions, LLC
- 19 — Patty Wright / Southern American Insurance
- 19 — George Major / Holes of San Antonio
- 21 — Gary Joeris / Joeris General Contractors
- 21 — Edmundo Rios / Core Electrical Group
- 23 — Babet Montes / MEI Industrial Solutions
- 27 — Michelle Urbanczyk / Urban Concrete

Know someone celebrating a birthday next month? Let us know!
Email Andi Mathews, andi@constructionnews.net

Industry FOLKS

Debra Kraft
Human Resources
**Comfort Air Engineering
& Primo Plumbing**
San Antonio TX



Born and raised in New Braunfels, TX, Debra Kraft enjoyed life in a small town with access to the big city. She had the distinguished pleasure of watching her small Texas town grow into a thriving, fast-growing community while still maintaining its strong sense of connection and local values. That balance of growth and roots is something that has stayed consistent throughout her life, keeping that “home again” feeling.

She is a New Braunfels High School graduate, go Unicorns! After graduating, Debra attended Blinn Junior High College in Brenham, TX where she studied courses that aligned with both her interests and strengths.

Having always been drawn to the construction industry seeking an opportunity to help build something meaningful, Debra wanted to pursue something that would challenge her, provide practical skills, and create opportunities for long-term career growth. So, when the opportunity arose to work alongside her mentor, Debra knew it was the right path for her and has enjoyed being a part of the construction industry ever since.

For the past 22 years, Debra has been a part of Comfort Air Engineering & Primo Plumbing, working in their Human Resources department.

“It isn’t just the work that has kept me here. It’s the people. I value the family-oriented environment the most. I enjoy the opportunity to solve problems, work with a great team, and the satisfaction of seeing the results of our efforts come

together. Every day brings new challenges and opportunities to learn and grow.”

Hardworking, dependable, and committed to contributing to her team, Debra takes pride in being someone others can count on. Debra is always looking for opportunities to grow both personally and professionally. She is an active volunteer in various trade associations and charities. She is especially proud of her involvement with the San Antonio Rodeo where she has served on its “Hall of Fame” committee for well over 10 years.

Debra’s mentor, **Andrea Wurzbach**, has been an important staple in her life. She has encouraged Debra and has helped shape her confidence as a woman working in an industry that is not dominated by women. “Her influence has been instrumental in my professional growth.”

Debra is the proud dog mom of a 10-month-old miniature Australian shepherd, named Willow. Still in her puppy phase, Willow is full of energy with plenty of personality.

Outside of work, life is not quiet for long thanks to Willow. She brings a lot of joy to Debra’s everyday life, keeping things fun and entertaining. In her free time, Debra enjoys going to live music venues, dancing, volunteering, and spending time away from the same old routine, enjoying those special moments that can only come through taking the time to smell the roses. -cwr

From the Ground Up



Bartlett Cocke General Contractors are proud to celebrate the groundbreaking of Liberty Hill ISD Elementary School #9, a future-focused campus designed to support generations of students to come.

This new 115,000 SF, two-story elementary school will provide dynamic spaces for learning, creativity, and collaboration, including dedicated classrooms for art, science, STEM, and more. From the ground up, this campus is

being built to serve the rapidly growing Liberty Hill community with environments that inspire curiosity and connection.

Bartlett Cocke is grateful to partner with Liberty Hill ISD, PBK, their incredible trade partners, and the entire Bartlett Cocke team for helping make this milestone possible. Projects like these are built through collaboration, shared vision, and a commitment to building better lives.

Supporting Youth, Strengthening Community



The SpawGlass-Austin team is proud to partner with Williamson County, TX on the expansion of their Juvenile Justice Center in Georgetown. This two-phase project reflects the county’s commitment to providing a safe, supportive environment for youth while planning for long-term growth. The new facility will incorporate trauma-informed design and add 48

beds along with dedicated learning spaces. Once complete, the renovated existing building will further enhance the county’s ability to deliver individualized care that prioritizes rehabilitation and reduces recidivism. Through this expansion, we’re helping build a space that meets the evolving needs of the community and supports the county’s vision for the next 25 to 30 years.

READ THE NEWEST ISSUE ONLINE!
www.constructionnews.net



BUYERS BARRICADES

24/7 TRAFFIC CONTROL SERVICE | SALES | RENTAL
BUYERSBARRICADES.COM

AS LOW AS 0% OR CASH REBATES*

TAKE ON MORE. SPEND LESS.

Bobcat® compact track loaders and excavators give you the power to dig deeper, lift higher, and finish faster. And for a limited time, you'll save big with 0% financing or huge cash rebates. Don't wait – these savings won't last long. Stop by your local Bobcat dealer today and put unbeatable performance to work on your next job.

*Offer ends 06/30/2026. See bobcatce.com/promotions for complete terms and conditions.

Bobcat of Austin (512) 251-3415 **Bobcat of Buda** (512) 884-5533 **Bobcat of Marble Falls** (830) 220-6070 **Bobcat of Temple** (254) 523-4900

Association Calendar

Content submitted by Associations to Construction News

ABC CTX

Associated Builders & Contractors
Central Texas Chapter

Jun. 4: OSHA 30, 8am-4pm, 2600 Longhorn Blvd., Austin

Jun. 4: Mapping the Future: 2nd Annual Construction Summit & 5th Annual General Contractor Expo – Presented by Structure Tone Southwest LLC & Lochridge Priest Inc., 9am-4:30pm

Jun. 5: First Aid/CPR Training, 8-10am

Jun. 9-12: The University of Texas at Arlington OSHA Education Center/ OSHA #510, 8am-5pm

Jun 10: Safety Series: Heat related Illness, 11am-1pm

Jun. 17: Coffee & Contractors Hosted by Prosperity Electric, 7:30-9am, Mozarts Coffee Roasters, 3825 Lake Austin Blvd., Austin

ASA

American Subcontractors
Association Austin

Jun. 3: GC Panel & Happy Hour, 2:30-5pm, Central Machine Works, 4824 E. Chavez St., Austin

Jun. 8-10: Legislative Fly In on Capitol Hill & ASA Board Meeting, Washinton, DC

Jun 25: Austin Coffee Social, 8am-10pm, Snooze, 1700 S. Lamar Blvd. Ste. 301, Austin

CTRCA

Central Texas Roofing
Contractors Association

Jun. 19: Summer Networking Event, 5-8pm, Electric Shuffle Austin, 91 Red River St., #102, Austin

CTSA

Central Texas Subcontractors
Association

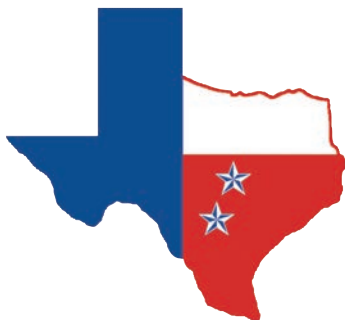
Jun. 12: Golf Tournament, 11am, The Golf Club at Star Ranch, 2500 FM 685, Hutto

TCA

Texas Construction Association
Jun. 4: Open House, 4:30-6:30pm, Texas Construction Association, 1011 San Jacinto Blvd., Ste. 330. RSVP Bryan – bhadley@texcon.org

AGC

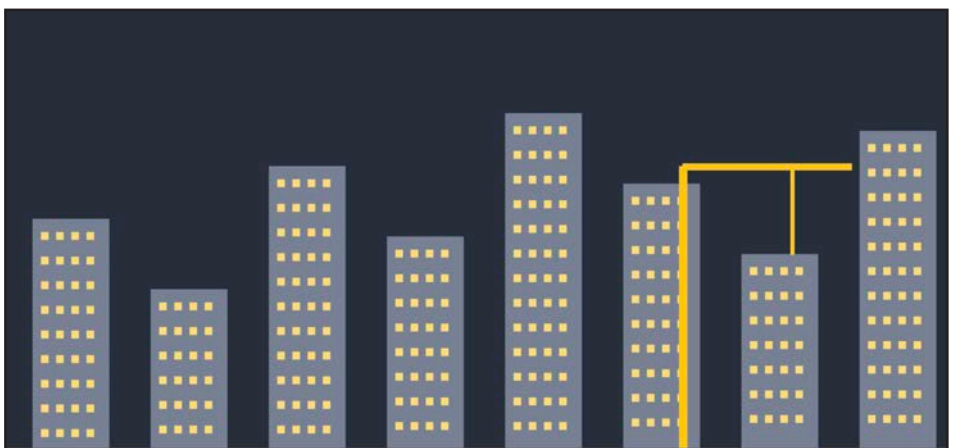
Associated General Contractors Austin
Jun. 12-14: CLC Bay Fishing Tournament, Bay Flats Lodge, 391 Bayside Dr., Seadrift



Here's to another year of great food, great people, and an amazing cause in the books. **The Nitsche Group** is proud to sponsor the Charcoal Challenge at the Lee County Fair again for the 2026 season. Proceeds from the Fair and Charcoal Challenge go directly toward scholarships for local students, helping open doors and create opportunities for their future. A huge thank you to the Charcoal Challenge Committee, volunteers, cook teams, sponsors, and the incredible community for making this event possible. And special thanks to The Nitsche Group team members, **Dustin Schneider** (20 years) and **Kat Schneider** (14 years), for their years of involvement with the event, that's over 30 years of combined work and dedication to this great event.

Austin Construction Current Trends

Central Texas Construction Market Update – 2026



Austin Construction Trends 2026

AI Infrastructure, Data Centers, Utilities & Industrial Growth



NOTHING IS OUT OF REACH

CRANE RENTAL
SPECIALTY RIGGING
MACHINERY MOVING
INDUSTRIAL STORAGE

NEW CLASS A STORAGE FACILITY

↓ IN BUDA, TX



CONTACT US

SAN ANTONIO 210.656.7900
AUSTIN 512.501.1718
ONLINE tntcrane.com



AI infrastructure, utility expansion and mission-critical projects continue driving construction growth across the Austin region.

Austin's construction market in 2026 is increasingly being driven by artificial intelligence infrastructure, data centers, semiconductor manufacturing and utility expansion projects. While traditional multifamily development has slowed from its peak pace, contractors tied to power infrastructure and mission-critical facilities continue to report strong demand across Central Texas.

Industry leaders say data center construction is now one of the largest drivers of commercial development in the Austin-San Antonio corridor. The growth is creating substantial opportunities for electrical contractors, mechanical trades, concrete contractors, crane services and utility infrastructure firms.

Electrical contractors remain among the most sought-after trades in the region as large-scale AI campuses and semiconductor projects continue competing for skilled labor. Contractors involved in backup power systems, switchgear installation, substation construction and industrial HVAC systems are seeing some of the strongest demand.

The Samsung Taylor semiconductor campus continues supporting regional industrial growth east of Austin, while additional industrial and warehouse developments remain active along SH-130 and throughout communities including Round Rock, Pflugerville, Hutto, Kyle and San Marcos.

Utility infrastructure is also becoming a major focus as population growth and AI-related energy demand place additional pressure on transmission systems, substations, water systems and wastewater infrastructure. Civil contractors and utility contractors continue reporting heavy workloads tied to long-term infrastructure expansion.

Residential construction has softened compared to the rapid growth years of 2021 through 2023, particularly in multifamily housing. However, suburban single-family growth remains active in areas surrounding Austin and New Braunfels as population migration into Central Texas continues.

Construction firms involved in mission-critical infrastructure, utility construction, electrical systems, industrial development and heavy civil work are expected to remain among the strongest-performing sectors in the Austin market moving into the second half of 2026.

Big Expansion, Bigger Impact

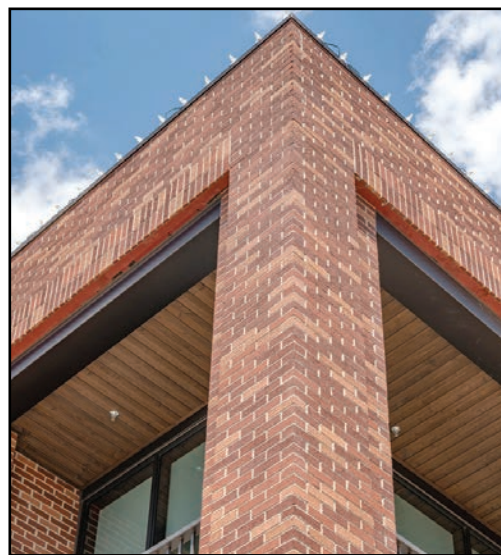
Alterman, Inc. recently broke ground on the \$1.5B Walnut Creek Wastewater Treatment Plant expansion. A facility that treats over 50% of Austin’s wastewater will expand capacity from 75MGD to 100MGD, supporting a region of 1M+ people.

The plant will remain fully operational during construction while advancing safer treatment, improved water quality, and flood protection.

Alterman is joined by **MWH Constructors** serving as the project General Contractor and other partners including **AECOM**.



Wine and Brick: A pairing that never goes out of style



Acmec Brick Company is thrilled with how the project at Kork Wine Bar in Georgetown, turned out. This Cherokee Brick mingle from Acme Brick Tile & Stone provides a rich, textured backdrop that perfectly complements the modern, industrial feel of the space. It is a great example of how the right masonry can anchor a commercial design and create an inviting atmosphere for the community.



OVER 1500 EMPLOYEES

EMR OF 0.50 (2023)

LOCATIONS

- SAN ANTONIO
- AUSTIN
- DALLAS
- NEW MEXICO

CAPABILITIES

- Electrical Construction
- HVAC Controls
- Pre-Construction Services
- Industrial
- Technologies
- Water/Wastewater
- Security Solutions
- I&C
- Controlled Access
- Preventative Maintenance
- 24-Hour Emergency Service
- Outdoor Substations

CONNECT WITH US

www.goalterman.com

210.496.6888

